

## SESN3 rabbit pAb

<b>Catalog No :</b>	YT7266
<b>Reactivity :</b>	Human;Mouse
<b>Applications :</b>	WB;ELISA;IHC
<b>Target :</b>	SESN3
<b>Fields :</b>	>>p53 signaling pathway;>>Longevity regulating pathway
<b>Gene Name :</b>	SESN3 SEST3
<b>Protein Name :</b>	SESN3
<b>Human Gene Id :</b>	143686
<b>Human Swiss Prot No :</b>	P58005
<b>Mouse Gene Id :</b>	75747
<b>Mouse Swiss Prot No :</b>	Q9CYP7
<b>Immunogen :</b>	Synthesized peptide derived from human SESN3 AA range: 35-85
<b>Specificity :</b>	This antibody detects endogenous levels of SESN3 at Human/Mouse
<b>Formulation :</b>	Liquid in PBS containing 50% glycerol, 0.5% BSA and 0.02% sodium azide.
<b>Source :</b>	Polyclonal, Rabbit,IgG
<b>Dilution :</b>	WB 1:500-2000;IHC 1:50-300; ELISA 2000-20000
<b>Purification :</b>	The antibody was affinity-purified from rabbit antiserum by affinity-chromatography using epitope-specific immunogen.
<b>Concentration :</b>	1 mg/ml

**Storage Stability :** -15°C to -25°C/1 year(Do not lower than -25°C)

**Molecularweight :** 54kD

**Background :** This gene encodes a member of the sestrin family of stress-induced proteins. The encoded protein reduces the levels of intracellular reactive oxygen species induced by activated Ras downstream of RAC-alpha serine/threonine-protein kinase (Akt) and FoxO transcription factor. The protein is required for normal regulation of blood glucose, insulin resistance and plays a role in lipid storage in obesity. Alternative splicing results in multiple transcript variants. [provided by RefSeq, Oct 2012],

**Function :** caution:Positions 27 to 191 are in EST BF328700; positions 244 to 492 can be found in EST BG291497 but several frameshifts need to be corrected to restore the correct sequence. Positions 412 to 492 are in AF086251 with no conflicts.,similarity:Belongs to the sestrin family.,tissue specificity:Widely expressed.,

**Subcellular Location :** Cytoplasm .

**Expression :** Widely expressed.

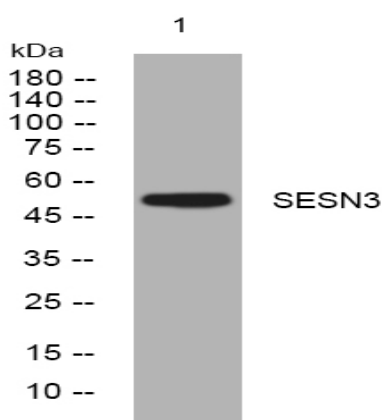
**Sort :** 16255

**No4 :** 1

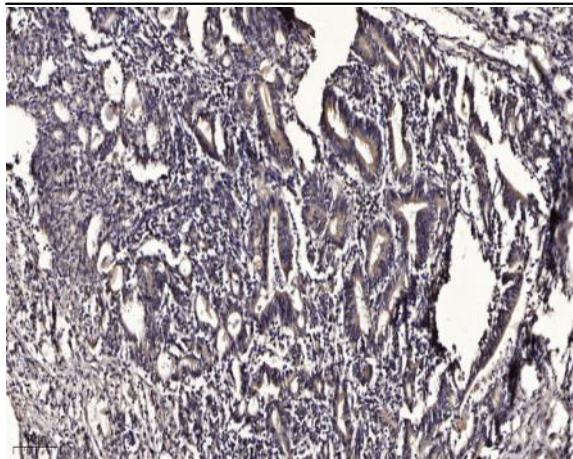
**Host :** Rabbit

**Modifications :** Unmodified

## Products Images



Western blot analysis of lysates from HeLa cells, primary antibody was diluted at 1:1000, 4° over night



Immunohistochemical analysis of paraffin-embedded human Gastric adenocarcinoma. 1, Antibody was diluted at 1:200(4° overnight). 2, Tris-EDTA,pH9.0 was used for antigen retrieval. 3,Secondary antibody was diluted at 1:200(room temperature, 45min).