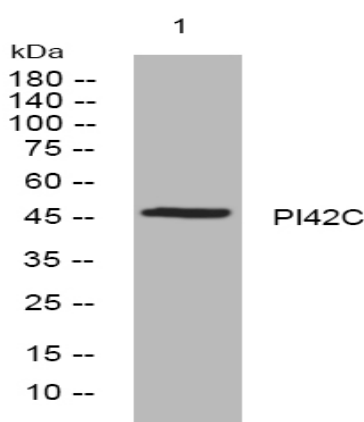


PI42C rabbit pAb

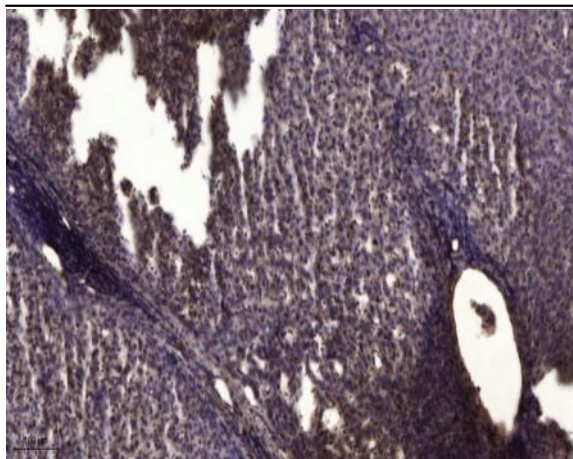
Catalog No :	YT7265
Reactivity :	Human;Mouse;Rat
Applications :	WB;ELISA;IHC
Target :	PI42C
Fields :	>>Inositol phosphate metabolism;>>Metabolic pathways;>>Phosphatidylinositol signaling system;>>Regulation of actin cytoskeleton
Gene Name :	PIP4K2C PIP5K2C
Protein Name :	PI42C
Human Gene Id :	79837
Human Swiss Prot No :	Q8TBX8
Mouse Gene Id :	117150
Mouse Swiss Prot No :	Q91XU3
Rat Gene Id :	140607
Rat Swiss Prot No :	O88370
Immunogen :	Synthesized peptide derived from human PI42C AA range: 262-312
Specificity :	This antibody detects endogenous levels of PI42C at Human/Mouse/Rat
Formulation :	Liquid in PBS containing 50% glycerol, 0.5% BSA and 0.02% sodium azide.
Source :	Polyclonal, Rabbit,IgG
Dilution :	WB 1:500-2000;IHC 1:50-300; ELISA 2000-20000

Purification :	The antibody was affinity-purified from rabbit antiserum by affinity-chromatography using epitope-specific immunogen.
Concentration :	1 mg/ml
Storage Stability :	-15°C to -25°C/1 year(Do not lower than -25°C)
Molecularweight :	46kD
Function :	catalytic activity:ATP + 1-phosphatidyl-1D-myo-inositol 5-phosphate = ADP + 1-phosphatidyl-1D-myo-inositol 4,5-bisphosphate.,function:May play an important role in the production of Phosphatidylinositol bisphosphate (PIP2), in the endoplasmic reticulum.,PTM:Phosphorylated.,similarity:Contains 1 PI5K domain.,subcellular location:Mostly found in the cytosol and surrounding plasma membrane. However, its presence in the endoplasmic reticulum seems to be a prerequisite for PIP2 synthesis.,
Subcellular Location :	Endoplasmic reticulum . Cytoplasm .
Sort :	12685
No4 :	1
Host :	Rabbit
Modifications :	Unmodified

Products Images



Western blot analysis of lysates from DU145 cells, primary antibody was diluted at 1:1000, 4° over night



Immunohistochemical analysis of paraffin-embedded human liver cancer. 1, Antibody was diluted at 1:200(4° overnight). 2, Tris-EDTA,pH9.0 was used for antigen retrieval. 3,Secondary antibody was diluted at 1:200(room temperature, 45min).