

NMRL1 rabbit pAb

Catalog No :	YT7264
Reactivity :	Human;Mouse;Rat
Applications :	WB
Target :	NMRL1
Gene Name :	NMRAL1 HSCARG
Protein Name :	NMRL1
Human Gene Id :	57407
Human Swiss Prot No :	Q9HBL8
Mouse Gene Id :	67824
Mouse Swiss Prot No :	Q8K2T1
Rat Swiss Prot No :	P86172
Immunogen :	Synthesized peptide derived from human NMRL1 AA range: 179-229
Specificity :	This antibody detects endogenous levels of NMRL1 at Human/Mouse/Rat
Formulation :	Liquid in PBS containing 50% glycerol, 0.5% BSA and 0.02% sodium azide.
Source :	Polyclonal, Rabbit,IgG
Dilution :	WB 1[?]500-2000
Purification :	The antibody was affinity-purified from rabbit antiserum by affinity-chromatography using epitope-specific immunogen.
Concentration :	1 mg/ml

Storage Stability : -15°C to -25°C/1 year(Do not lower than -25°C)

Molecularweight : 33kD

Background : This gene encodes an NADPH sensor protein that preferentially binds to NADPH. The encoded protein also negatively regulates the activity of NF-kappaB in a ubiquitylation-dependent manner. It plays a key role in cellular antiviral response by negatively regulating the interferon response factor 3-mediated expression of interferon beta. Alternative splicing of this gene results in multiple transcript variants. [provided by RefSeq, Feb 2015],

Function : similarity:Belongs to the NmrA-type oxidoreductase family.,subunit:Homodimer; disulfide-linked.,

Subcellular Location : Cytoplasm. Cytoplasm, perinuclear region. Nucleus. Under normal redox growth conditions localizes in the cytoplasm and perinuclear region. Nuclear localization is promoted by increased intracellular nitric oxide and reduced NADPH/NADP(+) ratios.

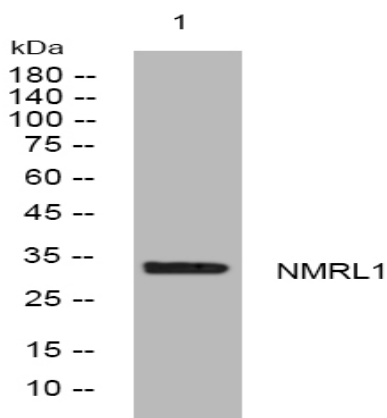
Sort : 10908

No4 : 1

Host : Rabbit

Modifications : Unmodified

Products Images



Western blot analysis of lysates from MDA-MB cells, primary antibody was diluted at 1:1000, 4° over night