

SDK1 rabbit pAb

Catalog No :	YT7261
Reactivity :	Human;Mouse
Applications :	WB;IHC
Target :	SDK1
Gene Name :	SDK1
Protein Name :	SDK1
Human Gene Id :	221935
Human Swiss Prot No :	Q7Z5N4
Mouse Gene Id :	330222
Mouse Swiss Prot No :	Q3UH53
Immunogen :	Synthesized peptide derived from human SDK1 AA range: 962-1012
Specificity :	This antibody detects endogenous levels of SDK1 at Human/Mouse
Formulation :	Liquid in PBS containing 50% glycerol, 0.5% BSA and 0.02% sodium azide.
Source :	Polyclonal, Rabbit,IgG
Dilution :	WB 1:500-2000;IHC 1:50-300
Purification :	The antibody was affinity-purified from rabbit antiserum by affinity-chromatography using epitope-specific immunogen.
Concentration :	1 mg/ml
Storage Stability :	-15°C to -25°C/1 year(Do not lower than -25°C)

Molecularweight : 243kD

Background : The protein encoded by this gene is a member of the immunoglobulin superfamily. The protein contains six immunoglobulin-like domains and thirteen fibronectin type III domains. Fibronectin type III domains are present in both extracellular and intracellular proteins and tandem repeats are known to contain binding sites for DNA, heparin and the cell surface. Alternative splicing results in multiple transcript variants. [provided by RefSeq, Jul 2016],

Function : function:Cell adhesion protein that guides axonal terminals to specific synapses in developing neurons. Dysregulation of this protein may play an important role in podocyte dysfunction in HIV-associated nephropathy.,similarity:Contains 13 fibronectin type-III domains.,similarity:Contains 6 Ig-like C2-type (immunoglobulin-like) domains.,tissue specificity:Up-regulated in glomeruli in HIV-associated nephropathy. In diseased glomeruli, significantly overexpressed and the expression is no longer restricted to mesangial cells but includes podocytes and parietal epithelial cells.,

Subcellular Location : Cell membrane ; Single-pass type I membrane protein . Cell junction, synapse .

Expression : Up-regulated in glomeruli in HIV-associated nephropathy. In diseased glomeruli, significantly overexpressed and the expression is no longer restricted to mesangial cells but includes podocytes and parietal epithelial cells (PubMed:15213259).

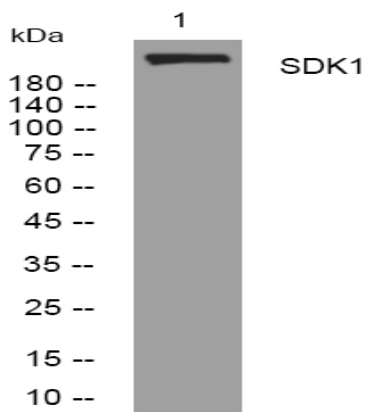
Sort : 16196

No4 : 1

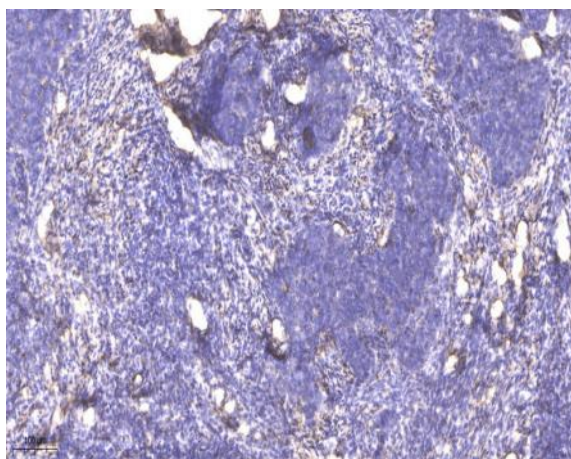
Host : Rabbit

Modifications : Unmodified

Products Images



Western blot analysis of lysates from SW480 cells, primary antibody was diluted at 1:1000, 4° over night



Immunohistochemical analysis of paraffin-embedded human cervical carcinoma. 1, Antibody was diluted at 1:200(4° overnight). 2, Tris-EDTA,pH9.0 was used for antigen retrieval. 3,Secondary antibody was diluted at 1:200(room temperature, 45min).