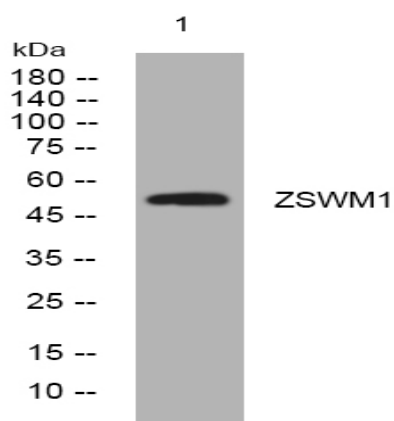


ZSWM1 rabbit pAb

Catalog No :	YT7259
Reactivity :	Human;Mouse
Applications :	WB
Target :	ZSWM1
Gene Name :	ZSWIM1 C20orf162
Protein Name :	ZSWM1
Human Gene Id :	90204
Human Swiss Prot No :	Q9BR11
Mouse Gene Id :	71971
Mouse Swiss Prot No :	Q9CWW7
Immunogen :	Synthesized peptide derived from human ZSWM1 AA range: 252-302
Specificity :	This antibody detects endogenous levels of ZSWM1 at Human/Mouse
Formulation :	Liquid in PBS containing 50% glycerol, 0.5% BSA and 0.02% sodium azide.
Source :	Polyclonal, Rabbit,IgG
Dilution :	WB 1:500-2000
Purification :	The antibody was affinity-purified from rabbit antiserum by affinity-chromatography using epitope-specific immunogen.
Concentration :	1 mg/ml
Storage Stability :	-15°C to -25°C/1 year(Do not lower than -25°C)

Molecularweight :	53kD
Function :	similarity:Contains 1 SWIM-type zinc finger.,
Subcellular Location :	nucleus,
Sort :	24794
No4 :	1
Host :	Rabbit
Modifications :	Unmodified

Products Images



Western blot analysis of lysates from AD293 cells, primary antibody was diluted at 1:1000, 4° over night