

SIN1 rabbit pAb

Catalog No :	YT7258
Reactivity :	Human;Mouse;Rat
Applications :	WB;ELISA;IHC
Target :	SIN1
Fields :	>>mTOR signaling pathway
Gene Name :	MAPKAP1 MIP1 SIN1
Protein Name :	SIN1
Human Gene Id :	79109
Human Swiss Prot No :	Q9BPZ7
Mouse Gene Id :	227743
Mouse Swiss Prot No :	Q8BKH7
Rat Gene Id :	296648
Rat Swiss Prot No :	Q6AYF1
Immunogen :	Synthesized peptide derived from human SIN1 AA range: 193-243
Specificity :	This antibody detects endogenous levels of SIN1 at Human/Mouse/Rat
Formulation :	Liquid in PBS containing 50% glycerol, 0.5% BSA and 0.02% sodium azide.
Source :	Polyclonal, Rabbit,IgG
Dilution :	WB 1:500-2000;IHC 1:50-300; ELISA 2000-20000
Purification :	The antibody was affinity-purified from rabbit antiserum by affinity-

chromatography using epitope-specific immunogen.

Concentration : 1 mg/ml

Storage Stability : -15°C to -25°C/1 year(Do not lower than -25°C)

Molecularweight : 57kD

Background : This gene encodes a protein that is highly similar to the yeast SIN1 protein, a stress-activated protein kinase. Alternatively spliced transcript variants encoding distinct isoforms have been described. Alternate polyadenylation sites as well as alternate 3' UTRs have been identified for transcripts of this gene. [provided by RefSeq, Jul 2008],

Function : function:Essential component of the TORC2 complex, which plays a critical role in AKT1 'Ser-473' phosphorylation, and may modulate the phosphorylation of PKCA and regulate actin cytoskeleton organization. Inhibits MAP3K2 by preventing its dimerization and autophosphorylation. Inhibits HRAS and KRAs signaling. Enhances osmotic stress-induced phosphorylation of ATF2 and ATF2-mediated transcription.,similarity:Belongs to the SIN1 family.,subunit:All isoforms except isoform 4 are able to be part of the target of rapamycin 2 complex (TORC2) comprised of FRAP1, LST8, PROTOR1, RICTOR and MAPKAP1. Interacts with ATF2, MAP3K2 and MAPK8. Interacts with GTP-bound HRAS and KRAS. Interacts with IFNAR2.,tissue specificity:Ubiquitously expressed, with highest levels in heart and skeletal muscle.,

Subcellular Location : Cell membrane; Peripheral membrane protein. Cytoplasmic vesicle. Nucleus.

Expression : Ubiquitously expressed, with highest levels in heart and skeletal muscle.

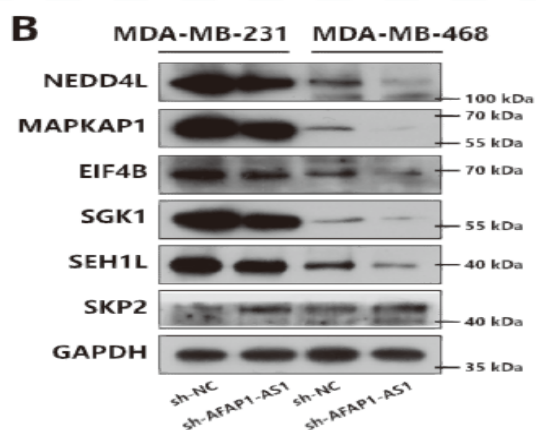
Sort : 16337

No4 : 1

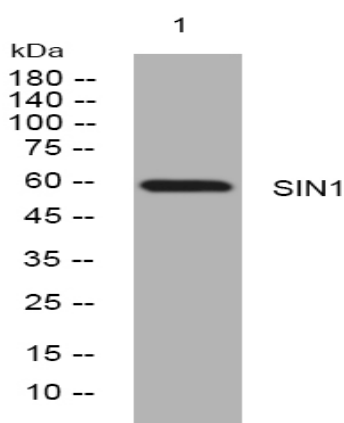
Host : Rabbit

Modifications : Unmodified

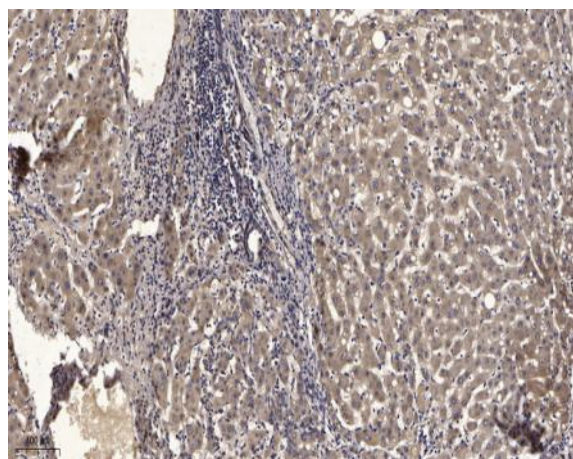
Products Images



SP1-Induced Upregulation of LncRNA AFAP1-AS1 Promotes Tumor Progression in Triple-Negative Breast Cancer by Regulating mTOR Pathway. INTERNATIONAL JOURNAL OF MOLECULAR SCIENCES Yidong Zhou WB Human 1:500 MDA-231 cell,MDA-MB-468 cell



Western blot analysis of lysates from U2OS cells, primary antibody was diluted at 1:1000, 4° over night



Immunohistochemical analysis of paraffin-embedded human liver cancer. 1, Antibody was diluted at 1:200(4° overnight). 2, Tris-EDTA,pH9.0 was used for antigen retrieval. 3,Secondary antibody was diluted at 1:200(room temperature, 45min).