

AL1L2 rabbit pAb

Catalog No :	YT7251
Reactivity :	Human;Mouse
Applications :	WB
Target :	AL1L2
Fields :	>>One carbon pool by folate;>>Metabolic pathways
Gene Name :	ALDH1L2
Protein Name :	AL1L2
Human Gene Id :	160428
Human Swiss Prot No :	Q3SY69
Mouse Gene Id :	216188
Mouse Swiss Prot No :	Q8K009
Immunogen :	Synthesized peptide derived from human AL1L2 AA range: 74-124
Specificity :	This antibody detects endogenous levels of AL1L2 at Human/Mouse
Formulation :	Liquid in PBS containing 50% glycerol, 0.5% BSA and 0.02% sodium azide.
Source :	Polyclonal, Rabbit,IgG
Dilution :	WB 1[?]500-2000
Purification :	The antibody was affinity-purified from rabbit antiserum by affinity-chromatography using epitope-specific immunogen.
Concentration :	1 mg/ml

Storage Stability : -15°C to -25°C/1 year(Do not lower than -25°C)

Molecularweight : 102kD

Background : This gene encodes a member of both the aldehyde dehydrogenase superfamily and the formyl transferase superfamily. This member is the mitochondrial form of 10-formyltetrahydrofolate dehydrogenase (FDH), which converts 10-formyltetrahydrofolate to tetrahydrofolate and CO₂ in an NADP(+)-dependent reaction, and plays an essential role in the distribution of one-carbon groups between the cytosolic and mitochondrial compartments of the cell. Alternatively spliced transcript variants have been found for this gene.[provided by RefSeq, Oct 2010],

Function : catalytic activity:10-formyltetrahydrofolate + NADP(+) + H(2)O = tetrahydrofolate + CO(2) + NADPH.,sequence caution:Wrong choice of CDS.,similarity:Belongs to the aldehyde dehydrogenase family.,similarity:Contains 1 acyl carrier domain.,similarity:In the C-terminal section; belongs to the aldehyde dehydrogenase family. ALDH1L subfamily.,similarity:In the N-terminal section; belongs to the GART family.,

Subcellular Location : Mitochondrion .

Expression : Highly expressed in pancreas, heart, brain and skeletal muscle.

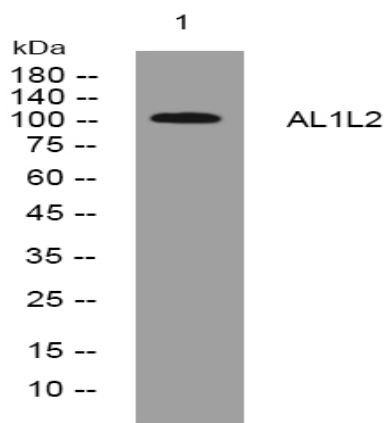
Sort : 1876

No4 : 1

Host : Rabbit

Modifications : Unmodified

Products Images



Western blot analysis of lysates from Jurkat cells, primary antibody was diluted at 1:1000, 4° over night