

## SYF1 rabbit pAb

<b>Catalog No :</b>	YT7250
<b>Reactivity :</b>	Human;Mouse;Rat
<b>Applications :</b>	WB;ELISA;IHC
<b>Target :</b>	SYF1
<b>Fields :</b>	>>Spliceosome
<b>Gene Name :</b>	XAB2 HCNP KIAA1177 SYF1 PP3898
<b>Protein Name :</b>	SYF1
<b>Human Gene Id :</b>	56949
<b>Human Swiss Prot No :</b>	Q9HCS7
<b>Mouse Gene Id :</b>	67439
<b>Mouse Swiss Prot No :</b>	Q9DCD2
<b>Rat Gene Id :</b>	245976
<b>Rat Swiss Prot No :</b>	Q99PK0
<b>Immunogen :</b>	Synthesized peptide derived from human SYF1 AA range: 345-395
<b>Specificity :</b>	This antibody detects endogenous levels of SYF1 at Human/Mouse/Rat
<b>Formulation :</b>	Liquid in PBS containing 50% glycerol, 0.5% BSA and 0.02% sodium azide.
<b>Source :</b>	Polyclonal, Rabbit,IgG
<b>Dilution :</b>	WB 1:500-2000;IHC 1:50-300; ELISA 2000-20000
<b>Purification :</b>	The antibody was affinity-purified from rabbit antiserum by affinity-

---

chromatography using epitope-specific immunogen.

---

**Concentration :** 1 mg/ml

---

**Storage Stability :** -15°C to -25°C/1 year(Do not lower than -25°C)

---

**Molecularweight :** 94kD

---

**Function :** function:Involved in transcription-coupled repair (TCR), transcription and pre-mRNA splicing.,sequence caution:Alternative splicing. Incomplete sequence. Incomplete sequence.,similarity:Belongs to the crooked-neck family.,similarity:Contains 14 HAT repeats.,subcellular location:Detected in the splicing complex carrying pre-mRNA.,subunit:Associates with RNA polymerase II, the TCR-specific proteins CKN1/CSA and ERCC6/CSB, and XPA. Identified in the spliceosome C complex, at least composed of AQR, ASCC3L1, C19orf29, CDC40, CDC5L, CRNKL1, DDX23, DDX41, DDX48, DDX5, DGCR14, DHX35, DHX38, DHX8, EFTUD2, FRG1, GPATC1, HNRPA1, HNRPA2B1, HNRPA3, HNRPC, HNRPF, HNRPH1, HNRPK, HNRPM, HNRPR, HNRPU, KIAA1160, KIAA1604, LSM2, LSM3, MAGOH, MORG1, PABPC1, PLRG1, PNN, PPIE, PPIL1, PPIL3, PPWD1, PRPF19, PRPF4B, PRPF6, PRPF8, RALY, RBM22, RBM8A, RBMX, SART1, SF3A1, SF3A2, SF3A3, SF3B1, SF3B2, SF3B3, SFRS1, S

---

**Subcellular Location :** Nucleus . Detected in the splicing complex carrying pre-mRNA. .

---

**Sort :** 16786

---

**No4 :** 1

---

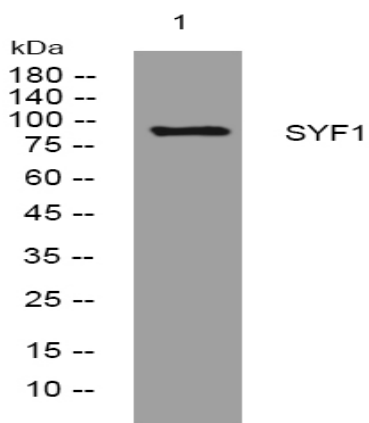
**Host :** Rabbit

---

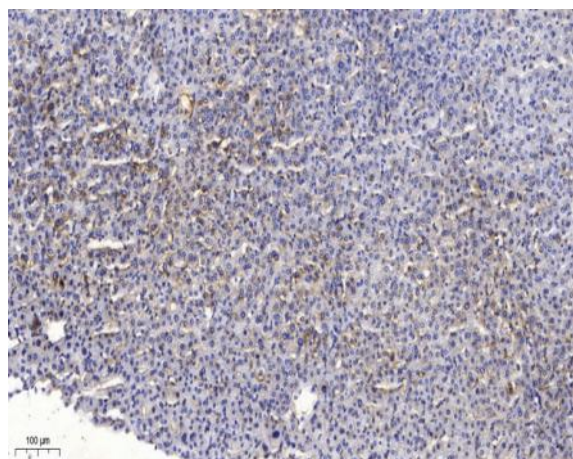
**Modifications :** Unmodified

---

## Products Images



Western blot analysis of lysates from MCF-7 cells, primary antibody was diluted at 1:1000, 4° over night



Immunohistochemical analysis of paraffin-embedded human liver cancer. 1, Antibody was diluted at 1:200(4° overnight). 2, Tris-EDTA,pH9.0 was used for antigen retrieval. 3,Secondary antibody was diluted at 1:200(room temperature, 45min).