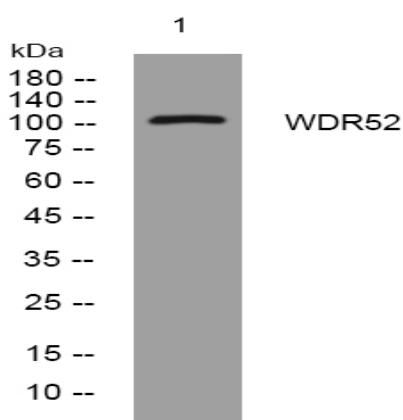


WDR52 rabbit pAb

Catalog No :	YT7249
Reactivity :	Human;Mouse
Applications :	WB
Target :	WDR52
Gene Name :	WDR52
Protein Name :	WDR52
Human Gene Id :	55779
Human Swiss Prot No :	Q96MT7
Immunogen :	Synthesized peptide derived from human WDR52 AA range: 492-542
Specificity :	This antibody detects endogenous levels of WDR52 at Human
Formulation :	Liquid in PBS containing 50% glycerol, 0.5% BSA and 0.02% sodium azide.
Source :	Polyclonal, Rabbit,IgG
Dilution :	WB 1[?]500-2000
Purification :	The antibody was affinity-purified from rabbit antiserum by affinity-chromatography using epitope-specific immunogen.
Concentration :	1 mg/ml
Storage Stability :	-15°C to -25°C/1 year(Do not lower than -25°C)
Molecularweight :	108kD
Function :	similarity:Contains 9 WD repeats.,

Subcellular Location :	<u>Cell projection, cilium, flagellum . Cytoplasm, cytoskeleton, flagellum axoneme .</u>
Expression :	<u>Testis-specific.</u>
Sort :	<u>24262</u>
No4 :	<u>1</u>
Host :	<u>Rabbit</u>
Modifications :	<u>Unmodified</u>

Products Images



Western blot analysis of lysates from Hela cells, primary antibody was diluted at 1:1000, 4° over night