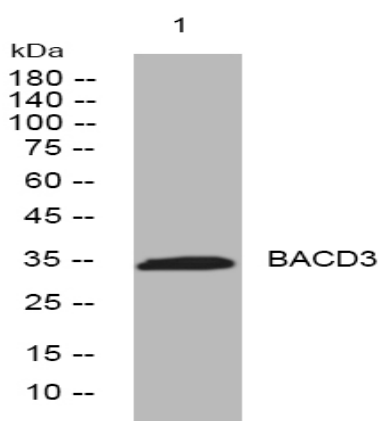


**BACD3 rabbit pAb**

<b>Catalog No :</b>	YT7244
<b>Reactivity :</b>	Human;Mouse;Rat
<b>Applications :</b>	WB
<b>Target :</b>	BACD3
<b>Gene Name :</b>	KCTD10 ULR061 MSTP028
<b>Protein Name :</b>	BACD3
<b>Human Gene Id :</b>	83892
<b>Human Swiss Prot No :</b>	Q9H3F6
<b>Mouse Gene Id :</b>	330171
<b>Mouse Swiss Prot No :</b>	Q922M3
<b>Rat Gene Id :</b>	494521
<b>Rat Swiss Prot No :</b>	Q7TPL3
<b>Immunogen :</b>	Synthesized peptide derived from human BACD3 AA range: 67-117
<b>Specificity :</b>	This antibody detects endogenous levels of BACD3 at Human/Mouse/Rat
<b>Formulation :</b>	Liquid in PBS containing 50% glycerol, 0.5% BSA and 0.02% sodium azide.
<b>Source :</b>	Polyclonal, Rabbit,IgG
<b>Dilution :</b>	WB 1:500-2000
<b>Purification :</b>	The antibody was affinity-purified from rabbit antiserum by affinity-chromatography using epitope-specific immunogen.

<b>Concentration :</b>	1 mg/ml
<b>Storage Stability :</b>	-15°C to -25°C/1 year(Do not lower than -25°C)
<b>Molecularweight :</b>	34kD
<b>Background :</b>	The protein encoded by this gene binds proliferating cell nuclear antigen (PCNA) and may be involved in DNA synthesis and cell proliferation. In addition, the encoded protein may be a tumor suppressor. Several protein-coding and non-protein coding transcript variants have been found for this gene. [provided by RefSeq, Dec 2015],
<b>Function :</b>	similarity:Belongs to the KCTD10/KCTD13/TNFAIP1 family.,similarity:Contains 1 BTB (POZ) domain.,subunit:Interacts with PCNA and DNA polymerase delta subunit 2/POLD2.,
<b>Subcellular Location :</b>	Nucleus .
<b>Sort :</b>	2549
<b>No4 :</b>	1
<b>Host :</b>	Rabbit
<b>Modifications :</b>	Unmodified

## Products Images



Western blot analysis of lysates from MCF-7 cells, primary antibody was diluted at 1:1000, 4° over night