

GRCR1 rabbit pAb

Catalog No :	YT7241
Reactivity :	Human;Mouse
Applications :	WB
Target :	GRCR1
Gene Name :	GRXCR1 DFNB25
Protein Name :	GRCR1
Human Gene Id :	389207
Human Swiss Prot No :	A8MXD5
Mouse Gene Id :	433899
Mouse Swiss Prot No :	Q50H32
Immunogen :	Synthesized peptide derived from human GRCR1 AA range: 132-182
Specificity :	This antibody detects endogenous levels of GRCR1 at Human/Mouse
Formulation :	Liquid in PBS containing 50% glycerol, 0.5% BSA and 0.02% sodium azide.
Source :	Polyclonal, Rabbit,IgG
Dilution :	WB 1[?]500-2000
Purification :	The antibody was affinity-purified from rabbit antiserum by affinity-chromatography using epitope-specific immunogen.
Concentration :	1 mg/ml
Storage Stability :	-15°C to -25°C/1 year(Do not lower than -25°C)

Molecularweight : 32kD

Background : This gene is one of 60 loci associated with autosomal-recessive nonsyndromic hearing impairment. This gene encodes a protein which contains GRX-like domains; these domains play a role in the S-glutathionylation of proteins and may be involved in actin organization in hair cells. [provided by RefSeq, Sep 2010],

Function : similarity:Belongs to the GRXCR1 family.,similarity:Contains 1 glutaredoxin domain.,

Subcellular Location : Cell projection, stereocilium . Cell projection, microvillus . Cell projection, kinocilium . In the inner ear, localized to stereocilia, apical microvilli of sensory cells and kinocilia. .

Expression : Expressed at low levels in adult lung, brain and duodenum with moderate levels in testis. Highly expressed in fetal cochlea.

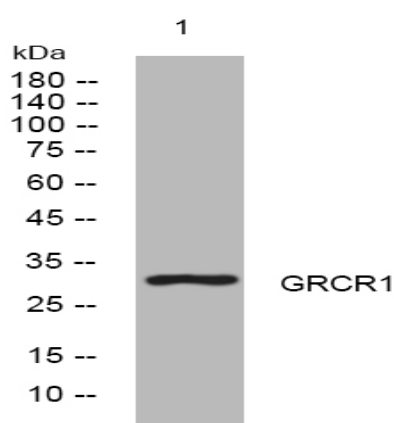
Sort : 7101

No4 : 1

Host : Rabbit

Modifications : Unmodified

Products Images



Western blot analysis of lysates from PC-12 cells, primary antibody was diluted at 1:1000, 4° over night