

## CU082 rabbit pAb

<b>Catalog No :</b>	YT7236
<b>Reactivity :</b>	Human
<b>Applications :</b>	IHC;IF
<b>Target :</b>	CU082
<b>Gene Name :</b>	LINC00310 C21orf82 NCRNA00310
<b>Protein Name :</b>	CU082
<b>Human Swiss Prot No :</b>	P59036
<b>Immunogen :</b>	Synthesized peptide derived from human CU082 AA range: 12-62
<b>Specificity :</b>	This antibody detects endogenous levels of CU082 at Human
<b>Formulation :</b>	Liquid in PBS containing 50% glycerol, 0.5% BSA and 0.02% sodium azide.
<b>Source :</b>	Polyclonal, Rabbit,IgG
<b>Dilution :</b>	IHC 1:50-200. IF 1:50-200
<b>Purification :</b>	The antibody was affinity-purified from rabbit antiserum by affinity-chromatography using epitope-specific immunogen.
<b>Concentration :</b>	1 mg/ml
<b>Storage Stability :</b>	-15°C to -25°C/1 year(Do not lower than -25°C)
<b>Molecularweight :</b>	7kD
<b>Function :</b>	tissue specificity:Widely expressed; not found in breast.,
<b>Expression :</b>	Widely expressed; not found in breast.

**Sort :** 4671

---

**No4 :** 1

---

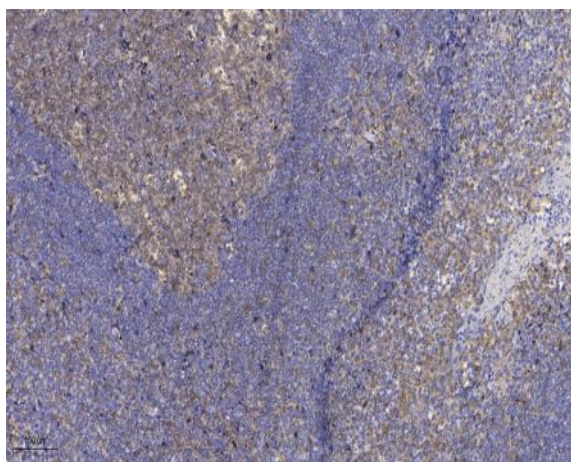
**Host :** Rabbit

---

**Modifications :** Unmodified

---

## Products Images



Immunohistochemical analysis of paraffin-embedded human tonsil. 1, Antibody was diluted at 1:200(4° overnight). 2, Tris-EDTA,pH9.0 was used for antigen retrieval. 3,Secondary antibody was diluted at 1:200(room temperature, 30min).