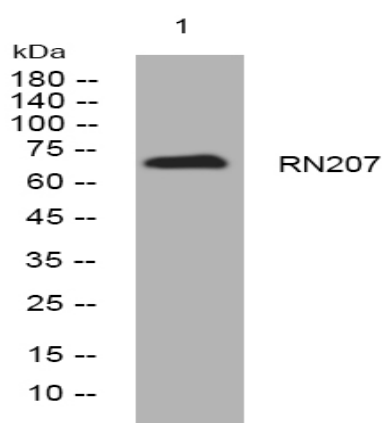


RN207 rabbit pAb

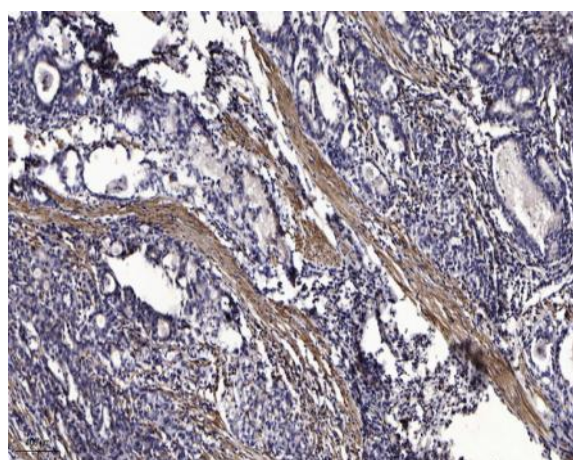
Catalog No :	YT7235
Reactivity :	Human;Mouse
Applications :	WB;ELISA;IHC
Target :	RN207
Gene Name :	RNF207 C1orf188
Protein Name :	RN207
Human Gene Id :	388591
Human Swiss Prot No :	Q6ZRF8
Mouse Gene Id :	433809
Mouse Swiss Prot No :	Q3V3A7
Immunogen :	Synthesized peptide derived from human RN207 AA range: 407-457
Specificity :	This antibody detects endogenous levels of RN207 at Human/Mouse
Formulation :	Liquid in PBS containing 50% glycerol, 0.5% BSA and 0.02% sodium azide.
Source :	Polyclonal, Rabbit,IgG
Dilution :	WB 1:500-2000;IHC 1:50-300; ELISA 2000-20000
Purification :	The antibody was affinity-purified from rabbit antiserum by affinity-chromatography using epitope-specific immunogen.
Concentration :	1 mg/ml
Storage Stability :	-15°C to -25°C/1 year(Do not lower than -25°C)

Molecularweight :	70kD
Function :	similarity:Contains 1 B box-type zinc finger.,similarity:Contains 1 RING-type zinc finger.,
Subcellular Location :	Cytoplasm . Probably located in the endoplasmic reticulum and/or possibly the cis-Golgi apparatus. .
Sort :	14548
No4 :	1
Host :	Rabbit
Modifications :	Unmodified

Products Images



Western blot analysis of lysates from HpeG2 cells, primary antibody was diluted at 1:1000, 4° over night



Immunohistochemical analysis of paraffin-embedded human Gastric adenocarcinoma. 1, Antibody was diluted at 1:200(4° overnight). 2, Tris-EDTA,pH9.0 was used for antigen retrieval. 3,Secondary antibody was diluted at 1:200(room temperature, 45min).