

MPZL2 rabbit pAb

Catalog No :	YT7231
Reactivity :	Human;Mouse
Applications :	WB;IHC
Target :	MPZL2
Gene Name :	MPZL2 EVA EVA1 UNQ606/PRO1192
Protein Name :	MPZL2
Human Gene Id :	10205
Human Swiss Prot No :	O60487
Mouse Swiss Prot No :	O70255
Immunogen :	Synthesized peptide derived from human MPZL2 AA range: 144-194
Specificity :	This antibody detects endogenous levels of MPZL2 at Human/Mouse
Formulation :	Liquid in PBS containing 50% glycerol, 0.5% BSA and 0.02% sodium azide.
Source :	Polyclonal, Rabbit,IgG
Dilution :	WB 1:500-2000;IHC 1:50-300
Purification :	The antibody was affinity-purified from rabbit antiserum by affinity-chromatography using epitope-specific immunogen.
Concentration :	1 mg/ml
Storage Stability :	-15°C to -25°C/1 year(Do not lower than -25°C)
Molecularweight :	24kD

Background : Thymus development depends on a complex series of interactions between thymocytes and the stromal component of the organ. Epithelial V-like antigen (EVA) is expressed in thymus epithelium and strongly downregulated by thymocyte developmental progression. This gene is expressed in the thymus and in several epithelial structures early in embryogenesis. It is highly homologous to the myelin protein zero and, in thymus-derived epithelial cell lines, is poorly soluble in nonionic detergents, strongly suggesting an association to the cytoskeleton. Its capacity to mediate cell adhesion through a homophilic interaction and its selective regulation by T cell maturation might imply the participation of EVA in the earliest phases of thymus organogenesis. The protein bears a characteristic V-type domain and two potential N-glycosylation sites in the extracellular domain; a putative serine phosphorylation site for casein kinase 2 is also present in the cytoplasmic tail. Two transcript variants encoding the same protein have been found for this gene. [provided by RefSeq, Jul 2008],

Function : function:Mediates homophilic cell-cell adhesion.,similarity:Belongs to the myelin P0 protein family.,similarity:Contains 1 Ig-like V-type (immunoglobulin-like) domain.,tissue specificity:Expressed in thymocytes and thymic stromal cells; expression elevated in some T-cell leukemias.,

Subcellular Location : Membrane ; Single-pass type I membrane protein .

Expression : Widely expressed. In fetal tissues, highest expression in the inner ear. In adult tissues, highest levels in thymus and lung.

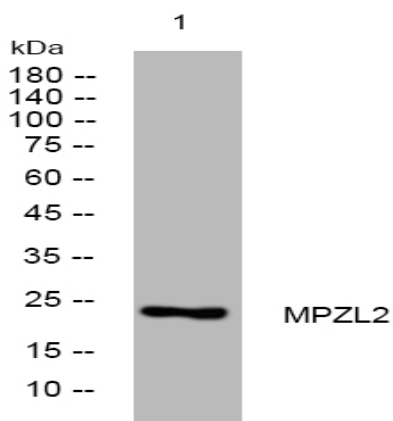
Sort : 10200

No4 : 1

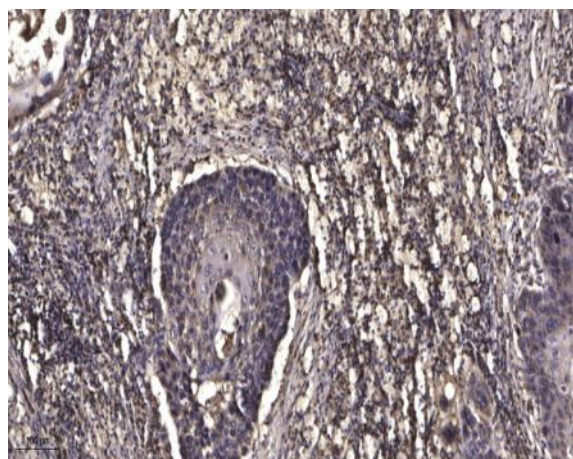
Host : Rabbit

Modifications : Unmodified

Products Images



Western blot analysis of lysates from U2OS cells, primary antibody was diluted at 1:1000, 4° over night



Immunohistochemical analysis of paraffin-embedded human Squamous cell carcinoma of lung. 1, Antibody was diluted at 1:200(4° overnight). 2, Tris-EDTA,pH9.0 was used for antigen retrieval. 3,Secondary antibody was diluted at 1:200(room temperature, 45min).