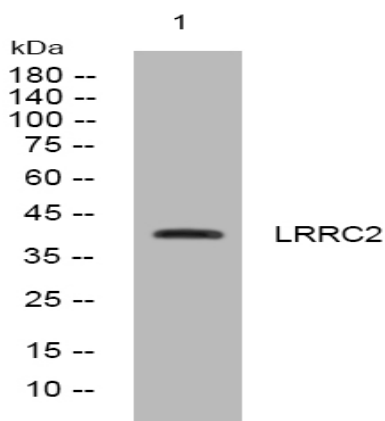


LRRC2 rabbit pAb

Catalog No :	YT7226
Reactivity :	Human;Mouse
Applications :	WB
Target :	LRRC2
Gene Name :	LRRC2
Protein Name :	LRRC2
Human Gene Id :	79442
Human Swiss Prot No :	Q9BYS8
Mouse Gene Id :	74249
Mouse Swiss Prot No :	Q8VDB8
Immunogen :	Synthesized peptide derived from human LRRC2 AA range: 130-180
Specificity :	This antibody detects endogenous levels of LRRC2 at Human/Mouse
Formulation :	Liquid in PBS containing 50% glycerol, 0.5% BSA and 0.02% sodium azide.
Source :	Polyclonal, Rabbit,IgG
Dilution :	WB 1:500-2000
Purification :	The antibody was affinity-purified from rabbit antiserum by affinity-chromatography using epitope-specific immunogen.
Concentration :	1 mg/ml
Storage Stability :	-15°C to -25°C/1 year(Do not lower than -25°C)

Molecularweight : 41kD**Background :** This gene encodes a member of the leucine-rich repeat-containing family of proteins, which function in diverse biological pathways. This family member may possibly be a nuclear protein. Similarity to the RAS suppressor protein, as well as expression down-regulation observed in tumor cells, suggests that it may function as a tumor suppressor. The gene is located in the chromosome 3 common eliminated region 1 (C3CER1), a 1.4 Mb region that is commonly deleted in diverse tumors. A related pseudogene has been identified on chromosome 2. [provided by RefSeq, Sep 2011],**Function :** similarity:Contains 9 LRR (leucine-rich) repeats.,**Sort :** 9254**No4 :** 1**Host :** Rabbit**Modifications :** Unmodified

Products Images



Western blot analysis of lysates from AD293 cells, primary antibody was diluted at 1:1000, 4° over night