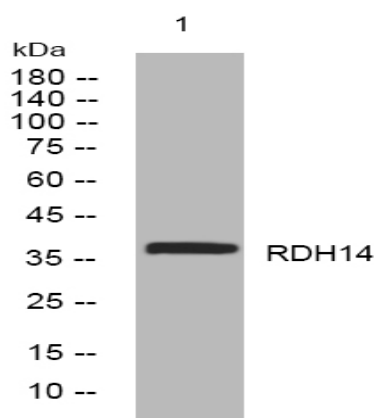


RDH14 rabbit pAb

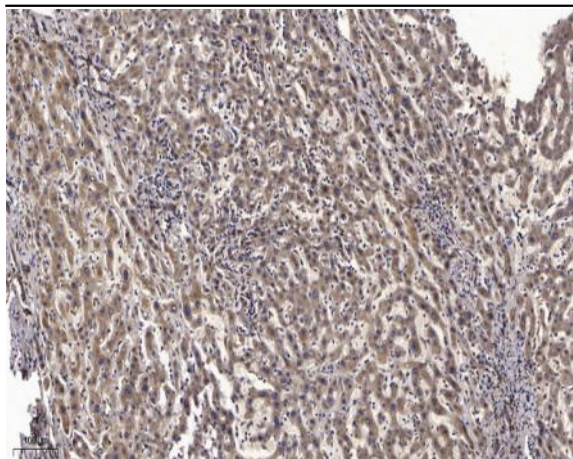
Catalog No :	YT7225
Reactivity :	Human;Mouse
Applications :	WB;ELISA;IHC
Target :	RDH14
Gene Name :	RDH14 PAN2 UNQ529/PRO1072
Protein Name :	RDH14
Human Gene Id :	57665
Human Swiss Prot No :	Q9HBH5
Mouse Gene Id :	105014
Mouse Swiss Prot No :	Q9ERI6
Immunogen :	Synthesized peptide derived from human RDH14 AA range: 283-333
Specificity :	This antibody detects endogenous levels of RDH14 at Human/Mouse
Formulation :	Liquid in PBS containing 50% glycerol, 0.5% BSA and 0.02% sodium azide.
Source :	Polyclonal, Rabbit,IgG
Dilution :	WB 1:500-2000;IHC 1:50-300; ELISA 2000-20000
Purification :	The antibody was affinity-purified from rabbit antiserum by affinity-chromatography using epitope-specific immunogen.
Concentration :	1 mg/ml
Storage Stability :	-15°C to -25°C/1 year(Do not lower than -25°C)

Molecularweight : 37kD**Function :** catalytic activity:A 5'-ribonucleotide + H(2)O = a ribonucleoside + phosphate.,cofactor:Magnesium.,enzyme regulation:Activated by ADP.,function:Dephosphorylates the 5' and 2'(3')-phosphates of deoxyribonucleotides. Helps to regulate adenosine levels.,function:Exhibits an oxidoreductive catalytic activity towards retinoids. Most efficient as an NADPH-dependent retinal reductase. Displays high activity toward 9-cis and all-trans-retinol. No steroid dehydrogenase activity detected.,similarity:Belongs to the 5'-nucleotidase type 3 family.,similarity:Belongs to the short-chain dehydrogenases/reductases (SDR) family.,tissue specificity:Expressed in brain, kidney, pancreas and placenta.,tissue specificity:Highly expressed in testis, placenta and pancreas. Detected at lower levels in heart, kidney, liver and lung.,**Subcellular Location :** nucleus,mitochondrion,lysosomal membrane,endoplasmic reticulum,endoplasmic reticulum membrane,membrane,**Expression :** Widely expressed.**Sort :** 14068**No4 :** 1**Host :** Rabbit**Modifications :** Unmodified

Products Images



Western blot analysis of lysates from MDA-MB cells, primary antibody was diluted at 1:1000, 4° over night



Immunohistochemical analysis of paraffin-embedded human liver cancer. 1, Antibody was diluted at 1:200(4° overnight). 2, Tris-EDTA,pH9.0 was used for antigen retrieval. 3,Secondary antibody was diluted at 1:200(room temperature, 45min).