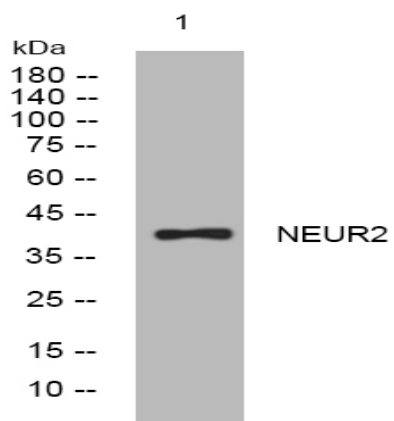


NEUR2 rabbit pAb

Catalog No :	YT7217
Reactivity :	Human;Mouse;Rat
Applications :	WB
Target :	NEUR2
Fields :	>>Other glycan degradation;>>Sphingolipid metabolism;>>Metabolic pathways
Gene Name :	NEU2
Protein Name :	NEUR2
Human Gene Id :	4759
Human Swiss Prot No :	Q9Y3R4
Mouse Gene Id :	23956
Mouse Swiss Prot No :	Q9JMH3
Rat Swiss Prot No :	Q64627
Immunogen :	Synthesized peptide derived from human NEUR2 AA range: 69-119
Specificity :	This antibody detects endogenous levels of NEUR2 at Human/Mouse/Rat
Formulation :	Liquid in PBS containing 50% glycerol, 0.5% BSA and 0.02% sodium azide.
Source :	Polyclonal, Rabbit,IgG
Dilution :	WB 1:500-2000
Purification :	The antibody was affinity-purified from rabbit antiserum by affinity-chromatography using epitope-specific immunogen.

Concentration :	1 mg/ml
Storage Stability :	-15°C to -25°C/1 year(Do not lower than -25°C)
Molecularweight :	42kD
Background :	This gene belongs to a family of glycohydrolytic enzymes which remove sialic acid residues from glycoproteins and glycolipids. Expression studies in COS7 cells confirmed that this gene encodes a functional sialidase. Its cytosolic localization was demonstrated by cell fractionation experiments. [provided by RefSeq, Jul 2008],
Function :	catalytic activity:Hydrolysis of alpha-(2->3)-, alpha-(2->6)-, alpha-(2->8)-glycosidic linkages of terminal sialic acid residues in oligosaccharides, glycoproteins, glycolipids, colominic acid and synthetic substrates.,function:Hydrolyzes sialylated compounds.,similarity:Belongs to the glycosyl hydrolase 33 family.,similarity:Contains 2 BNR repeats.,tissue specificity:Expressed in skeletal muscle, fetal liver and embryonic carcinoma cell line NT2D1.,
Subcellular Location :	Cytoplasm, cytosol .
Expression :	Expressed in skeletal muscle, fetal liver and embryonic carcinoma cell line NT2-D1.
Sort :	10695
No4 :	1
Host :	Rabbit
Modifications :	Unmodified

Products Images



Western blot analysis of lysates from MDA-MB cells, primary antibody was diluted at 1:1000, 4° over night