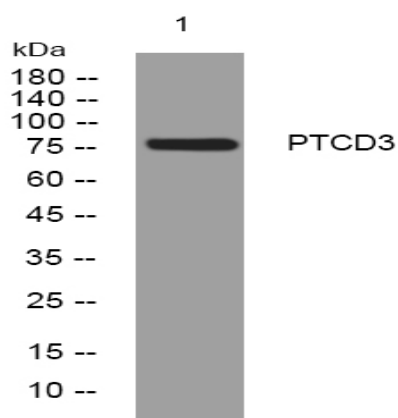


PTCD3 rabbit pAb

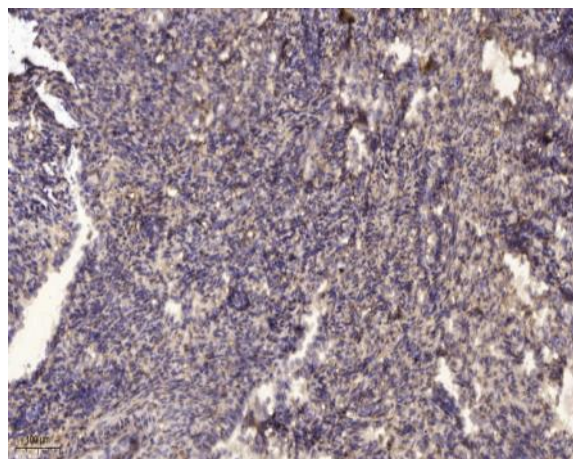
Catalog No :	YT7215
Reactivity :	Human;Mouse
Applications :	WB;IHC
Target :	PTCD3
Gene Name :	PTCD3 TRG15
Protein Name :	PTCD3
Human Gene Id :	55037
Human Swiss Prot No :	Q96EY7
Mouse Gene Id :	69956
Mouse Swiss Prot No :	Q14C51
Immunogen :	Synthesized peptide derived from human PTCD3 AA range: 624-674
Specificity :	This antibody detects endogenous levels of PTCD3 at Human/Mouse
Formulation :	Liquid in PBS containing 50% glycerol, 0.5% BSA and 0.02% sodium azide.
Source :	Polyclonal, Rabbit,IgG
Dilution :	WB 1:500-2000;IHC 1:50-300
Purification :	The antibody was affinity-purified from rabbit antiserum by affinity-chromatography using epitope-specific immunogen.
Concentration :	1 mg/ml
Storage Stability :	-15°C to -25°C/1 year(Do not lower than -25°C)

Molecularweight :	76kD
Function :	similarity:Belongs to the PTCD3 family.,similarity:Contains 10 PPR (pentatricopeptide) repeats.,
Subcellular Location :	Mitochondrion .
Expression :	Abundant in testes, skeletal muscle and heart tissue.
Sort :	13135
No4 :	1
Host :	Rabbit
Modifications :	Unmodified

Products Images



Western blot analysis of lysates from HpeG2 cells, primary antibody was diluted at 1:1000, 4° over night



Immunohistochemical analysis of paraffin-embedded human uterus. 1, Antibody was diluted at 1:200(4° overnight). 2, Tris-EDTA,pH9.0 was used for antigen retrieval. 3,Secondary antibody was diluted at 1:200(room temperature, 45min).