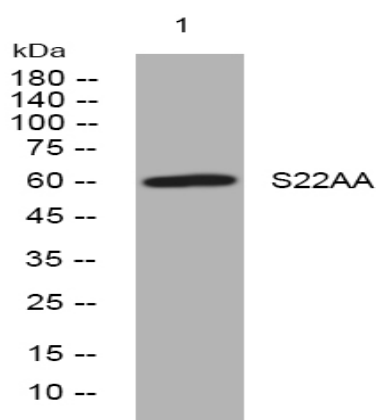


S22AA rabbit pAb

Catalog No :	YT7214
Reactivity :	Human
Applications :	WB
Target :	S22AA
Gene Name :	SLC22A10 OAT5
Protein Name :	S22AA
Human Gene Id :	387775
Human Swiss Prot No :	Q63ZE4
Immunogen :	Synthesized peptide derived from human S22AA AA range: 154-204
Specificity :	This antibody detects endogenous levels of S22AA at Human
Formulation :	Liquid in PBS containing 50% glycerol, 0.5% BSA and 0.02% sodium azide.
Source :	Polyclonal, Rabbit,IgG
Dilution :	WB 1:500-2000
Purification :	The antibody was affinity-purified from rabbit antiserum by affinity-chromatography using epitope-specific immunogen.
Concentration :	1 mg/ml
Storage Stability :	-15°C to -25°C/1 year(Do not lower than -25°C)
Molecularweight :	60kD
Function :	similarity:Belongs to the major facilitator superfamily. Organic cation transporter family.,tissue specificity:Detected in fetal and adult liver, and in adult kidney.,

Subcellular Location :	Membrane ; Multi-pass membrane protein .
Expression :	Detected in fetal and adult liver, and in adult kidney.
Sort :	14716
No4 :	1
Host :	Rabbit
Modifications :	Unmodified

Products Images



Western blot analysis of lysates from PC-12 cells, primary antibody was diluted at 1:1000, 4° over night