

## ERLN2 rabbit pAb

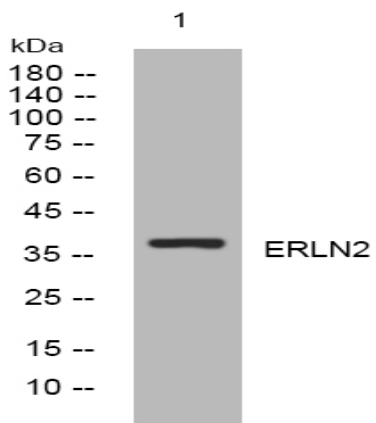
<b>Catalog No :</b>	YT7212
<b>Reactivity :</b>	Human;Mouse;Rat
<b>Applications :</b>	WB
<b>Target :</b>	ERLN2
<b>Gene Name :</b>	ERLIN2 C8orf2 SPFH2 UNQ2441/PRO5003/PRO9924
<b>Protein Name :</b>	ERLN2
<b>Human Gene Id :</b>	11160
<b>Human Swiss Prot No :</b>	O94905
<b>Mouse Gene Id :</b>	244373
<b>Mouse Swiss Prot No :</b>	Q8BFZ9
<b>Rat Gene Id :</b>	290823
<b>Rat Swiss Prot No :</b>	B5DEH2
<b>Immunogen :</b>	Synthesized peptide derived from human ERLN2 AA range: 239-289
<b>Specificity :</b>	This antibody detects endogenous levels of ERLN2 at Human/Mouse/Rat
<b>Formulation :</b>	Liquid in PBS containing 50% glycerol, 0.5% BSA and 0.02% sodium azide.
<b>Source :</b>	Polyclonal, Rabbit,IgG
<b>Dilution :</b>	WB 1:500-2000
<b>Purification :</b>	The antibody was affinity-purified from rabbit antiserum by affinity-chromatography using epitope-specific immunogen.

---

<b>Concentration :</b>	1 mg/ml
<b>Storage Stability :</b>	-15°C to -25°C/1 year(Do not lower than -25°C)
<b>Molecularweight :</b>	37kD
<b>Background :</b>	<p>This gene encodes a member of the SPFH domain-containing family of lipid raft-associated proteins. The encoded protein is localized to lipid rafts of the endoplasmic reticulum and plays a critical role in inositol 1,4,5-trisphosphate (IP3) signaling by mediating ER-associated degradation of activated IP3 receptors. Mutations in this gene are a cause of spastic paraplegia-18 (SPG18). Alternatively spliced transcript variants encoding multiple isoforms have been observed for this gene. [provided by RefSeq, Feb 2012],</p>
<b>Function :</b>	<p>function:Plays an important role in the early steps of the endoplasmic reticulum-associated degradation (ERAD) pathway. Involved in ITPR1 degradation by the ERAD pathway.,similarity:Belongs to the band 7/mec-2 family.,subcellular location:Associated with lipid raft-like domains of the endoplasmic reticulum membrane.,subunit:Interacts with activated ITPR1, independently of the degree of ITPR1 polyubiquitination.,tissue specificity:Ubiquitous.,</p>
<b>Subcellular Location :</b>	<p>Endoplasmic reticulum membrane ; Single-pass type II membrane protein . Associated with lipid raft-like domains of the endoplasmic reticulum membrane.</p>
<b>Expression :</b>	Ubiquitous.
<b>Sort :</b>	5736
<b>No4 :</b>	1
<b>Host :</b>	Rabbit
<b>Modifications :</b>	Unmodified

---

## Products Images



Western blot analysis of lysates from HeLa cells, primary antibody was diluted at 1:1000, 4° over night