

## SPI2B rabbit pAb

<b>Catalog No :</b>	YT7211
<b>Reactivity :</b>	Human
<b>Applications :</b>	WB;ELISA;IHC
<b>Target :</b>	SPI2B
<b>Gene Name :</b>	SPIN2B SPIN2
<b>Protein Name :</b>	SPI2B
<b>Human Gene Id :</b>	474343
<b>Human Swiss Prot No :</b>	Q9BPZ2
<b>Immunogen :</b>	Synthesized peptide derived from human SPI2B AA range: 73-123
<b>Specificity :</b>	This antibody detects endogenous levels of SPI2B at Human
<b>Formulation :</b>	Liquid in PBS containing 50% glycerol, 0.5% BSA and 0.02% sodium azide.
<b>Source :</b>	Polyclonal, Rabbit,IgG
<b>Dilution :</b>	WB 1:500-2000;IHC 1:50-300; ELISA 2000-20000
<b>Purification :</b>	The antibody was affinity-purified from rabbit antiserum by affinity-chromatography using epitope-specific immunogen.
<b>Concentration :</b>	1 mg/ml
<b>Storage Stability :</b>	-15°C to -25°C/1 year(Do not lower than -25°C)
<b>Molecularweight :</b>	28kD
<b>Function :</b>	function:Involved in the regulation of cell cycle progression, this activity is related to the inhibition of apoptosis following the removal of essential growth factors.,miscellaneous:Overexpression in murine myeloid cell line 32Dcl3 causes

G2/M arrest.,similarity:Belongs to the SPIN/STSY family.,tissue specificity:Detected in all the examined tissues with highest expression in liver, followed by heart, stomach, kidney, skeletal muscle, placenta, and pancreas.,

**Subcellular Location :**

Nucleus .

**Expression :**

Detected in all the examined tissues with highest expression in liver, followed by heart, stomach, kidney, skeletal muscle, placenta, and pancreas.

**Sort :**

16549

**No4 :**

1

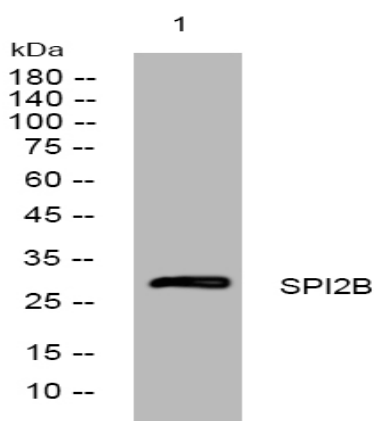
**Host :**

Rabbit

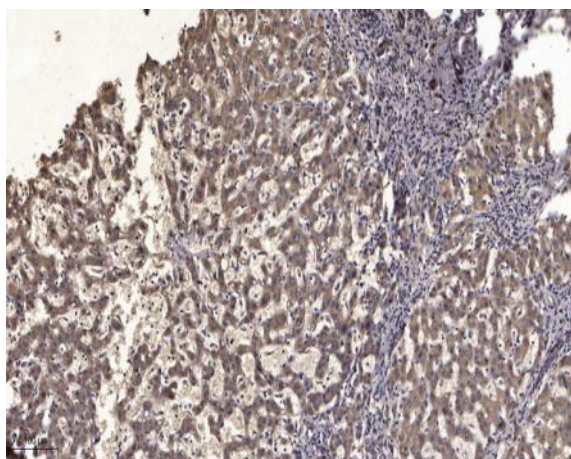
**Modifications :**

Unmodified

## Products Images



Western blot analysis of lysates from HeLa cells, primary antibody was diluted at 1:1000, 4° over night



Immunohistochemical analysis of paraffin-embedded human liver cancer. 1, Antibody was diluted at 1:200(4° overnight). 2, Tris-EDTA,pH9.0 was used for antigen retrieval. 3,Secondary antibody was diluted at 1:200(room temperature, 45min).