

KR261 rabbit pAb

Catalog No :	YT7210
Reactivity :	Human;Mouse
Applications :	WB;IHC
Target :	KR261
Gene Name :	KRTAP26-1 KAP26.1
Protein Name :	KR261
Human Gene Id :	388818
Human Swiss Prot No :	Q6PEX3
Mouse Gene Id :	69533
Mouse Swiss Prot No :	Q9D7N2
Immunogen :	Synthesized peptide derived from human KR261 AA range: 153-203
Specificity :	This antibody detects endogenous levels of KR261 at Human/Mouse
Formulation :	Liquid in PBS containing 50% glycerol, 0.5% BSA and 0.02% sodium azide.
Source :	Polyclonal, Rabbit,IgG
Dilution :	WB 1:500-2000;IHC 1:50-300
Purification :	The antibody was affinity-purified from rabbit antiserum by affinity-chromatography using epitope-specific immunogen.
Concentration :	1 mg/ml
Storage Stability :	-15°C to -25°C/1 year(Do not lower than -25°C)

Molecularweight : 23kD

Function : function:In the hair cortex, hair keratin intermediate filaments are embedded in an interfilamentous matrix, consisting of hair keratin-associated proteins (KRTAP), which are essential for the formation of a rigid and resistant hair shaft through their extensive disulfide bond cross-linking with abundant cysteine residues of hair keratins. The matrix proteins include the high-sulfur and high-glycine-tyrosine keratins.,similarity:Belongs to the PMG family.,subunit:Interacts with hair keratins.,tissue specificity:Localized high up in the well differentiated portion of the hair follicle cuticle (about 10-15 cell layers above the apex of the dermal papilla).

Subcellular Location : intermediate filament,

Expression : Localized high up in the well differentiated portion of the hair follicle cuticle (about 10-15 cell layers above the apex of the dermal papilla).

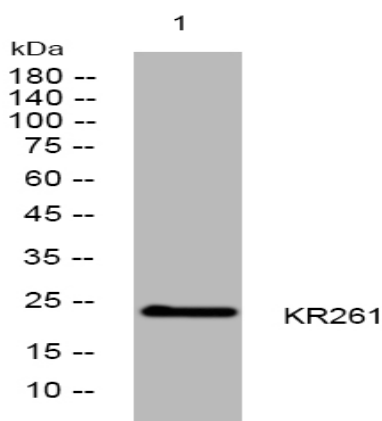
Sort : 8994

No4 : 1

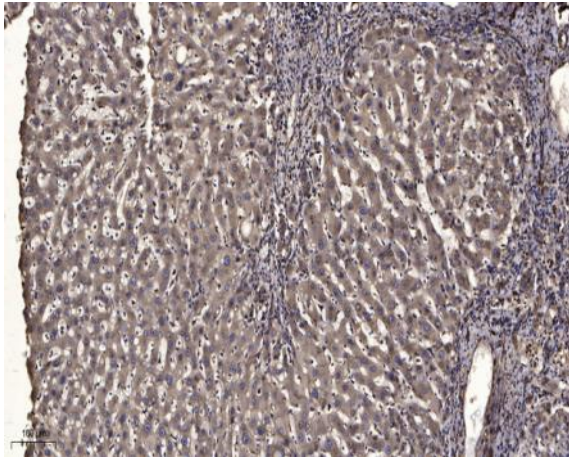
Host : Rabbit

Modifications : Unmodified

Products Images



Western blot analysis of lysates from MCF-7 cells, primary antibody was diluted at 1:1000, 4° over night



Immunohistochemical analysis of paraffin-embedded human liver cancer. 1, Antibody was diluted at 1:200(4° overnight). 2, Tris-EDTA,pH9.0 was used for antigen retrieval. 3,Secondary antibody was diluted at 1:200(room temperature, 45min).