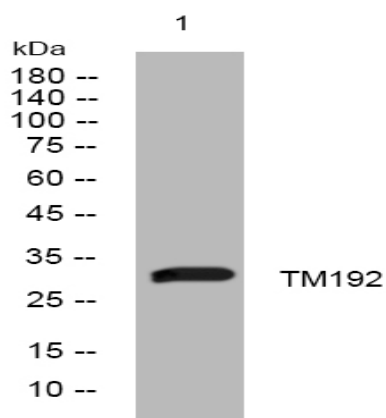


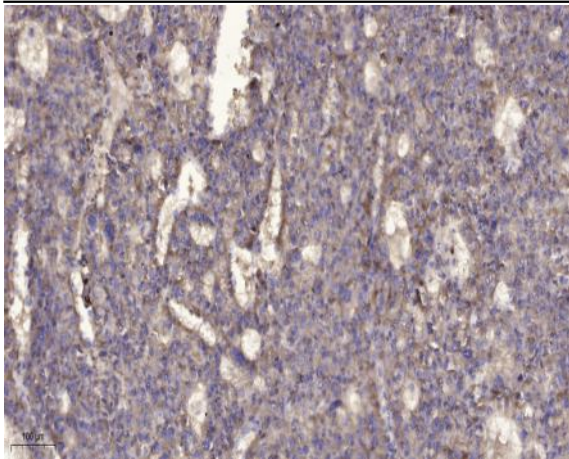
TM192 rabbit pAb

Catalog No :	YT7209
Reactivity :	Human;Mouse;Rat
Applications :	WB;IHC
Target :	TM192
Gene Name :	TMEM192
Protein Name :	TM192
Human Gene Id :	201931
Human Swiss Prot No :	Q8IY95
Mouse Gene Id :	73067
Mouse Swiss Prot No :	Q9CXT7
Rat Gene Id :	361137
Rat Swiss Prot No :	Q5U1Y0
Immunogen :	Synthesized peptide derived from human TM192 AA range: 27-77
Specificity :	This antibody detects endogenous levels of TM192 at Human/Mouse/Rat
Formulation :	Liquid in PBS containing 50% glycerol, 0.5% BSA and 0.02% sodium azide.
Source :	Polyclonal, Rabbit,IgG
Dilution :	WB 1:500-2000;IHC 1:50-300
Purification :	The antibody was affinity-purified from rabbit antiserum by affinity-chromatography using epitope-specific immunogen.

Concentration :	1 mg/ml
Storage Stability :	-15°C to -25°C/1 year(Do not lower than -25°C)
Molecularweight :	30kD
Function :	PTM:Phosphorylated upon DNA damage, probably by ATM or ATR.,similarity:Belongs to the TMEM192 family.,
Subcellular Location :	Lysosome membrane ; Multi-pass membrane protein . Late endosome .
Expression :	Strongly expressed in kidney, liver, lung and pancreas.
Sort :	17208
No4 :	1
Host :	Rabbit
Modifications :	Unmodified

Products Images





Immunohistochemical analysis of paraffin-embedded human liver cancer. 1, Antibody was diluted at 1:200(4° overnight). 2, Tris-EDTA,pH9.0 was used for antigen retrieval. 3,Secondary antibody was diluted at 1:200(room temperature, 45min).