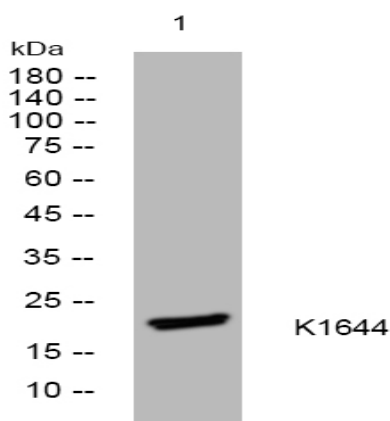


K1644 rabbit pAb

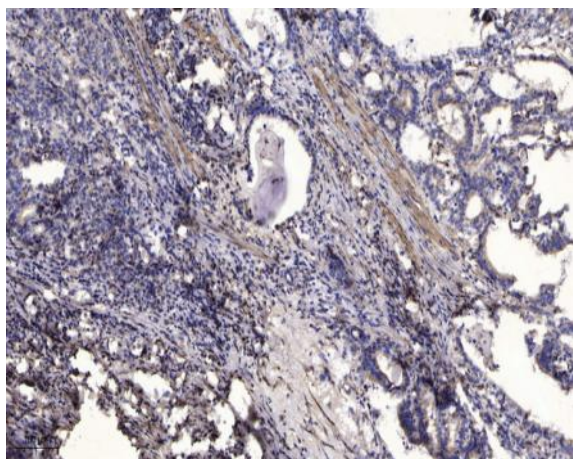
Catalog No :	YT7207
Reactivity :	Human;Mouse
Applications :	WB;ELISA;IHC
Target :	K1644
Gene Name :	KIAA1644
Protein Name :	K1644
Human Gene Id :	85352
Human Swiss Prot No :	Q3SXP7
Mouse Gene Id :	72301
Mouse Swiss Prot No :	Q0VBP7
Immunogen :	Synthesized peptide derived from human K1644 AA range: 100-150
Specificity :	This antibody detects endogenous levels of K1644 at Human/Mouse
Formulation :	Liquid in PBS containing 50% glycerol, 0.5% BSA and 0.02% sodium azide.
Source :	Polyclonal, Rabbit,IgG
Dilution :	WB 1:500-2000;IHC 1:50-300; ELISA 2000-20000
Purification :	The antibody was affinity-purified from rabbit antiserum by affinity-chromatography using epitope-specific immunogen.
Concentration :	1 mg/ml
Storage Stability :	-15°C to -25°C/1 year(Do not lower than -25°C)

Molecularweight :	22kD
Subcellular Location :	Membrane ; Single-pass type I membrane protein .
Sort :	8823
No4 :	1
Host :	Rabbit
Modifications :	Unmodified

Products Images



Western blot analysis of lysates from 293T cells, primary antibody was diluted at 1:1000, 4° over night



Immunohistochemical analysis of paraffin-embedded human Gastric adenocarcinoma. 1, Antibody was diluted at 1:200(4° overnight). 2, Tris-EDTA,pH9.0 was used for antigen retrieval. 3,Secondary antibody was diluted at 1:200(room temperature, 45min).