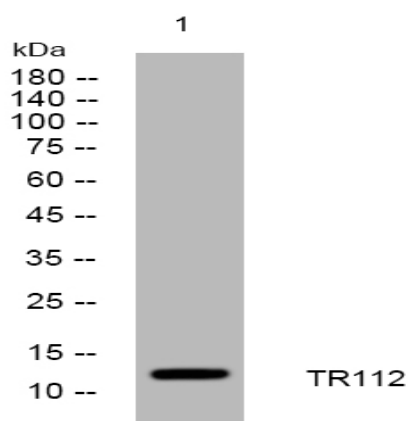


TR112 rabbit pAb

Catalog No :	YT7205
Reactivity :	Human;Mouse
Applications :	WB
Target :	TR112
Gene Name :	TRMT112 AD-001 HSPC152 HSPC170
Protein Name :	TR112
Human Gene Id :	51504
Human Swiss Prot No :	Q9UI30
Mouse Gene Id :	67674
Mouse Swiss Prot No :	Q9DCG9
Immunogen :	Synthesized peptide derived from human TR112 AA range: 65-115
Specificity :	This antibody detects endogenous levels of TR112 at Human/Mouse
Formulation :	Liquid in PBS containing 50% glycerol, 0.5% BSA and 0.02% sodium azide.
Source :	Polyclonal, Rabbit,IgG
Dilution :	WB 1:500-2000
Purification :	The antibody was affinity-purified from rabbit antiserum by affinity-chromatography using epitope-specific immunogen.
Concentration :	1 mg/ml
Storage Stability :	-15°C to -25°C/1 year(Do not lower than -25°C)

Molecularweight :	14kD
Function :	similarity:Belongs to the TRM112 family.,similarity:Contains 1 TRM112 domain.,
Subcellular Location :	Nucleus, nucleoplasm . Cytoplasm, perinuclear region . Localizes to a polarized perinuclear structure, overlapping partially with the Golgi and lysosomes (PubMed:25851604). .
Sort :	23462
No4 :	1
Host :	Rabbit
Modifications :	Unmodified

Products Images



Western blot analysis of lysates from SW480 cells, primary antibody was diluted at 1:1000, 4° over night