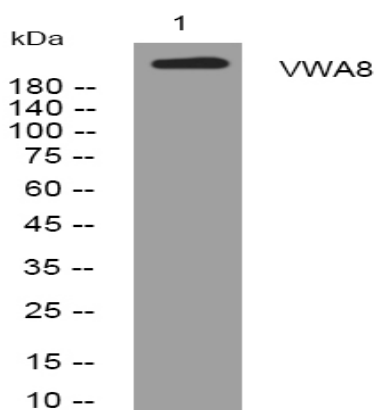


VWA8 rabbit pAb

Catalog No :	YT7204
Reactivity :	Human;Mouse
Applications :	WB
Target :	VWA8
Gene Name :	VWA8 KIAA0564
Protein Name :	VWA8
Human Gene Id :	23078
Human Swiss Prot No :	A3KMH1
Mouse Gene Id :	219189
Mouse Swiss Prot No :	Q8CC88
Immunogen :	Synthesized peptide derived from human VWA8 AA range: 1853-1903
Specificity :	This antibody detects endogenous levels of VWA8 at Human/Mouse
Formulation :	Liquid in PBS containing 50% glycerol, 0.5% BSA and 0.02% sodium azide.
Source :	Polyclonal, Rabbit,IgG
Dilution :	WB 1:500-2000
Purification :	The antibody was affinity-purified from rabbit antiserum by affinity-chromatography using epitope-specific immunogen.
Concentration :	1 mg/ml
Storage Stability :	-15°C to -25°C/1 year(Do not lower than -25°C)

Molecularweight :	210kD
Function :	similarity:Contains 1 VWFA domain.,
Subcellular Location :	[Isoform 1]: Mitochondrion .; [Isoform 2]: Mitochondrion . Peroxisome . Localizes to peroxisomes in a PEX7-dependent manner. .
Sort :	24238
No4 :	1
Host :	Rabbit
Modifications :	Unmodified

Products Images



Western blot analysis of lysates from A431 cells, primary antibody was diluted at 1:1000, 4° over night