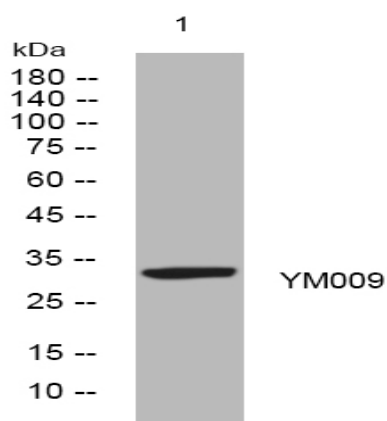


YM009 rabbit pAb

Catalog No :	YT7193
Reactivity :	Human;Mouse
Applications :	WB
Target :	YM009
Gene Name :	METTL21CP1
Protein Name :	YM009
Human Swiss Prot No :	A6NDL7
Mouse Gene Id :	403183
Mouse Swiss Prot No :	Q8CDZ2
Immunogen :	Synthesized peptide derived from human YM009 AA range: 174-224
Specificity :	This antibody detects endogenous levels of YM009 at Human/Mouse
Formulation :	Liquid in PBS containing 50% glycerol, 0.5% BSA and 0.02% sodium azide.
Source :	Polyclonal, Rabbit,IgG
Dilution :	WB 1:500-2000
Purification :	The antibody was affinity-purified from rabbit antiserum by affinity-chromatography using epitope-specific immunogen.
Concentration :	1 mg/ml
Storage Stability :	-15°C to -25°C/1 year(Do not lower than -25°C)
Molecularweight :	30kD

Sort :	<u>24409</u>
No4 :	<u>1</u>
Host :	<u>Rabbit</u>
Modifications :	<u>Unmodified</u>

Products Images



Western blot analysis of lysates from DU145 cells, primary antibody was diluted at 1:1000, 4° over night