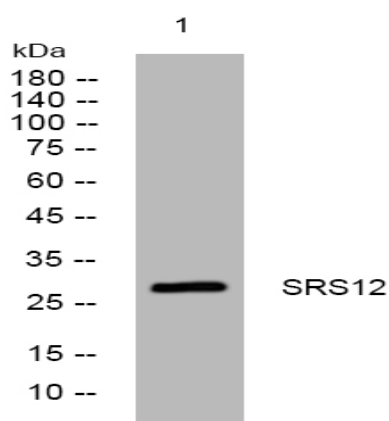


SRS12 rabbit pAb

Catalog No :	YT7192
Reactivity :	Human;Mouse
Applications :	WB
Target :	SRS12
Gene Name :	SRSF12 SFRS13B SFRS19 SRRP35
Protein Name :	SRS12
Human Gene Id :	135295
Human Swiss Prot No :	Q8WXF0
Mouse Gene Id :	272009
Mouse Swiss Prot No :	Q8C8K3
Immunogen :	Synthesized peptide derived from human SRS12 AA range: 105-155
Specificity :	This antibody detects endogenous levels of SRS12 at Human/Mouse
Formulation :	Liquid in PBS containing 50% glycerol, 0.5% BSA and 0.02% sodium azide.
Source :	Polyclonal, Rabbit,IgG
Dilution :	WB 1:500-2000
Purification :	The antibody was affinity-purified from rabbit antiserum by affinity-chromatography using epitope-specific immunogen.
Concentration :	1 mg/ml
Storage Stability :	-15°C to -25°C/1 year(Do not lower than -25°C)

Molecularweight : 29kD**Function :** function:Splicing factor that seems to antagonize SR proteins in pre-mRNA splicing regulation.,similarity:Belongs to the splicing factor SR family.,similarity:Contains 1 RRM (RNA recognition motif) domain.,tissue specificity:Expressed in testis.,**Subcellular Location :** Nucleus .**Expression :** Expressed in testis.**Sort :** 16624**No4 :** 1**Host :** Rabbit**Modifications :** Unmodified

Products Images



Western blot analysis of lysates from A431 cells, primary antibody was diluted at 1:1000, 4° over night