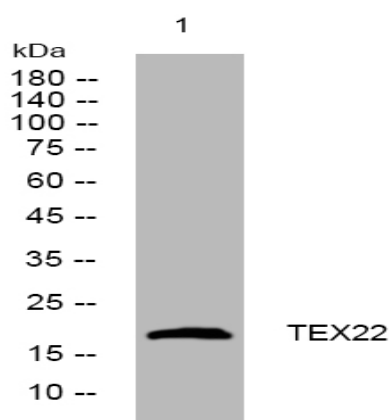


TEX22 rabbit pAb

Catalog No :	YT7189
Reactivity :	Human;Mouse
Applications :	WB
Target :	TEX22
Gene Name :	TEX22
Protein Name :	TEX22
Human Gene Id :	647310
Human Swiss Prot No :	C9J3V5
Mouse Gene Id :	75671
Mouse Swiss Prot No :	Q9D9U4
Immunogen :	Synthesized peptide derived from human TEX22 AA range: 5-55
Specificity :	This antibody detects endogenous levels of TEX22 at Human/Mouse
Formulation :	Liquid in PBS containing 50% glycerol, 0.5% BSA and 0.02% sodium azide.
Source :	Polyclonal, Rabbit,IgG
Dilution :	WB 1:500-2000
Purification :	The antibody was affinity-purified from rabbit antiserum by affinity-chromatography using epitope-specific immunogen.
Concentration :	1 mg/ml
Storage Stability :	-15°C to -25°C/1 year(Do not lower than -25°C)

Molecularweight :	17kD
Subcellular Location :	Cytoplasm . Cytoplasmic vesicle, secretory vesicle, acrosome .
Sort :	17051
No4 :	1
Host :	Rabbit
Modifications :	Unmodified

Products Images



Western blot analysis of lysates from U2OS cells, primary antibody was diluted at 1:1000, 4° over night