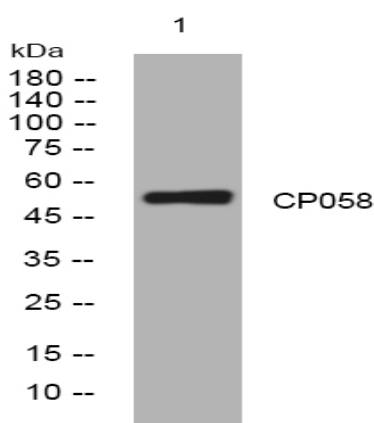


CP058 rabbit pAb

Catalog No :	YT7185
Reactivity :	Human;Mouse;Rat
Applications :	WB
Target :	CP058
Gene Name :	C16orf58
Protein Name :	CP058
Human Gene Id :	64755
Human Swiss Prot No :	Q96GQ5
Mouse Gene Id :	233913
Mouse Swiss Prot No :	Q91W34
Rat Gene Id :	361654
Rat Swiss Prot No :	Q499P8
Immunogen :	Synthesized peptide derived from human CP058 AA range: 367-417
Specificity :	This antibody detects endogenous levels of CP058 at Human/Mouse/Rat
Formulation :	Liquid in PBS containing 50% glycerol, 0.5% BSA and 0.02% sodium azide.
Source :	Polyclonal, Rabbit,IgG
Dilution :	WB 1:500-2000
Purification :	The antibody was affinity-purified from rabbit antiserum by affinity-chromatography using epitope-specific immunogen.

Concentration :	1 mg/ml
Storage Stability :	-15°C to -25°C/1 year(Do not lower than -25°C)
Molecularweight :	51kD
Background :	This gene encodes a putative transmembrane protein containing a conserved DUF647 domain that may be involved in protein-protein interaction. The encoded protein is related to a plant protein that participates in ultraviolet B light-sensing during root morphogenesis. [provided by RefSeq, Feb 2013],
Function :	similarity:Belongs to the UPF0420 family.,
Subcellular Location :	Membrane ; Single-pass membrane protein .
Sort :	4495
No4 :	1
Host :	Rabbit
Modifications :	Unmodified

Products Images



Western blot analysis of lysates from HpeG2 cells, primary antibody was diluted at 1:1000, 4° over night