

CHD7 rabbit pAb

Catalog No :	YT7184
Reactivity :	Human;Mouse
Applications :	IHC;IF
Target :	CHD7
Gene Name :	CHD7 KIAA1416
Protein Name :	CHD7
Human Gene Id :	55636
Human Swiss Prot No :	Q9P2D1
Mouse Gene Id :	320790
Mouse Swiss Prot No :	A2AJK6
Immunogen :	Synthesized peptide derived from human CHD7 AA range: 1703-1753
Specificity :	This antibody detects endogenous levels of CHD7 at Human/Mouse
Formulation :	Liquid in PBS containing 50% glycerol, 0.5% BSA and 0.02% sodium azide.
Source :	Polyclonal, Rabbit,IgG
Dilution :	IHC 1:50-200. IF 1:50-200
Purification :	The antibody was affinity-purified from rabbit antiserum by affinity-chromatography using epitope-specific immunogen.
Concentration :	1 mg/ml
Storage Stability :	-15°C to -25°C/1 year(Do not lower than -25°C)

Molecularweight : 330kD

Background : This gene encodes a protein that contains several helicase family domains. Mutations in this gene have been found in some patients with the CHARGE syndrome. Two transcript variants encoding different isoforms have been found for this gene. [provided by RefSeq, Oct 2015],

Function : disease:Defects in CHD7 are a cause of CHARGE syndrome [MIM:214800]. This syndrome, which is a common cause of congenital anomalies, is characterized by a non-random pattern of congenital anomalies including choanal atresia and malformations of the heart, inner ear, and retina.,disease:Defects in CHD7 are a cause of idiopathic hypogonadotropic hypogonadism (IHH) [MIM:146110]. IHH is defined as a deficiency of the pituitary secretion of follicle-stimulating hormone and luteinizing hormone, which results in the impairment of pubertal maturation and of reproductive function.,disease:Defects in CHD7 are the cause of Kallmann syndrome type 5 (KAL5) [MIM:612370]. Kallmann syndrome is a disorder that associates hypogonadotropic hypogonadism and anosmia. Anosmia or hyposmia is related to the absence or hypoplasia of the olfactory bulbs and tracts. Hypogonadism is due to deficiency in gonadotropi

Subcellular Location : [Isoform 1]: Nucleus .; [Isoform 3]: Nucleus, nucleolus .

Expression : Widely expressed in fetal and adult tissues.

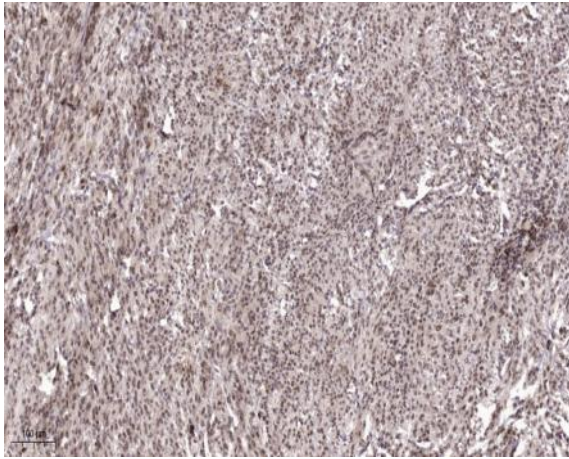
Sort : 3930

No4 : 1

Host : Rabbit

Modifications : Unmodified

Products Images



Immunohistochemical analysis of paraffin-embedded human Colon cancer. 1, Antibody was diluted at 1:200(4° overnight). 2, Tris-EDTA,pH9.0 was used for antigen retrieval. 3,Secondary antibody was diluted at 1:200(room temperature, 45min).