

## ROP1A rabbit pAb

<b>Catalog No :</b>	YT7183
<b>Reactivity :</b>	Human;Rat;Mouse;
<b>Applications :</b>	WB;IHC
<b>Target :</b>	ROP1A
<b>Gene Name :</b>	ROPN1 ROPN1A
<b>Protein Name :</b>	ROP1A
<b>Human Gene Id :</b>	54763
<b>Human Swiss Prot No :</b>	Q9HAT0
<b>Immunogen :</b>	Synthesized peptide derived from human ROP1A AA range: 85-135
<b>Specificity :</b>	This antibody detects endogenous levels of ROP1A at Human
<b>Formulation :</b>	Liquid in PBS containing 50% glycerol, 0.5% BSA and 0.02% sodium azide.
<b>Source :</b>	Polyclonal, Rabbit,IgG
<b>Dilution :</b>	WB 1:500-2000;IHC 1:50-300
<b>Purification :</b>	The antibody was affinity-purified from rabbit antiserum by affinity-chromatography using epitope-specific immunogen.
<b>Concentration :</b>	1 mg/ml
<b>Storage Stability :</b>	-15°C to -25°C/1 year(Do not lower than -25°C)
<b>Molecularweight :</b>	23kD
<b>Background :</b>	The protein encoded by this gene is found in the fibrous sheath of spermatazoa, where it interacts with rhophilin, a Rho GTPase binding protein. The encoded protein also can bind an A-kinase anchoring protein (AKAP110) and a calcium-

binding tyrosine phosphorylation-regulated protein (CABYR). This protein may be involved in sperm motility and has been shown to be a cancer-testis antigen in hematologic malignancies. Several transcript variants, some protein-coding and some non-protein coding, have been found for this gene. [provided by RefSeq, Dec 2015],

**Function :**

developmental stage:Expressed in fetal liver.,domain:The RIIa domain mediates interaction with AKAP3.,miscellaneous:The name 'ropporin' comes from the Japanese word 'oppo' which means 'tail'. ,similarity:Belongs to the ropporin family.,similarity:Contains 1 RIIa domain.,subcellular location:In the sperm tail, found in the principal piece and in the cytoplasmic droplet located at the distal end of the midpiece. Inner surface of the fibrous sheath.,subunit:Homodimer. Interacts with AKAP3 and RHPN1 (By similarity). May interact with SPA17.,tissue specificity:Testis specific in adult. Overexpressed in hematologic tumor cells.,

**Subcellular Location :**

Cell projection, cilium, flagellum . In the sperm tail, found in the principal piece and in the cytoplasmic droplet located at the distal end of the midpiece. Inner surface of the fibrous sheath. .

**Expression :**

Testis specific in adult. Overexpressed in hematologic tumor cells.

**Sort :**

14579

**No4 :**

1

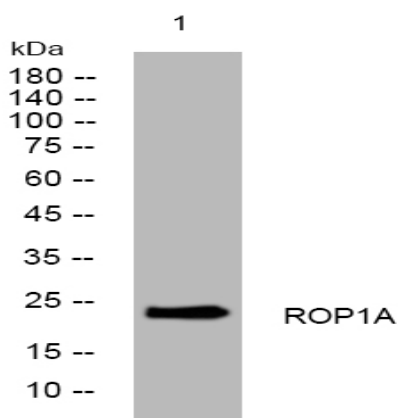
**Host :**

Rabbit

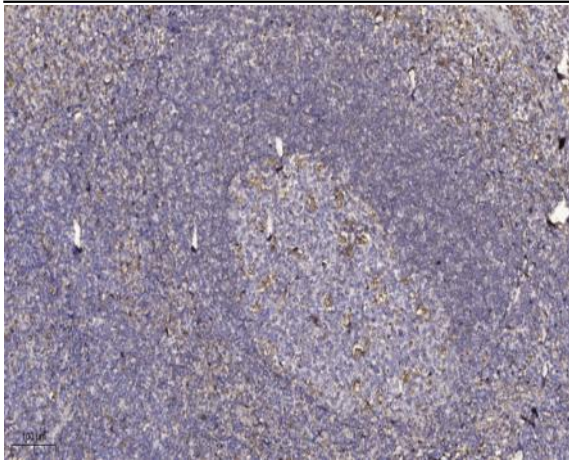
**Modifications :**

Unmodified

## Products Images



Western blot analysis of lysates from HeLa cells, primary antibody was diluted at 1:1000, 4° over night



Immunohistochemical analysis of paraffin-embedded human tonsil. 1, Antibody was diluted at 1:200(4° overnight). 2, Tris-EDTA,pH9.0 was used for antigen retrieval. 3,Secondary antibody was diluted at 1:200(room temperature, 45min).