

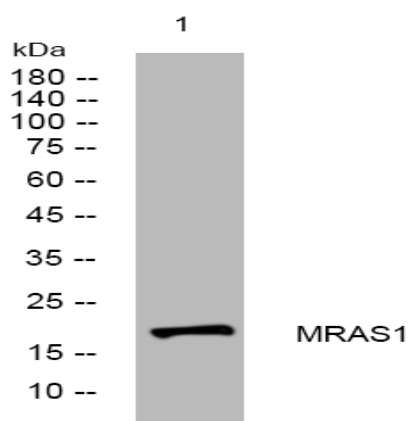
MRAS1 rabbit pAb

Catalog No :	YT7182
Reactivity :	Human
Applications :	WB
Target :	MRAS1
Gene Name :	MRGPRG-AS1 C11orf36 HSD-40 HSD40
Protein Name :	MRAS1
Human Swiss Prot No :	Q2M3A8
Immunogen :	Synthesized peptide derived from human MRAS1 AA range: 42-92
Specificity :	This antibody detects endogenous levels of MRAS1 at Human
Formulation :	Liquid in PBS containing 50% glycerol, 0.5% BSA and 0.02% sodium azide.
Source :	Polyclonal, Rabbit,IgG
Dilution :	WB 1:500-2000
Purification :	The antibody was affinity-purified from rabbit antiserum by affinity-chromatography using epitope-specific immunogen.
Concentration :	1 mg/ml
Storage Stability :	-15°C to -25°C/1 year(Do not lower than -25°C)
Molecularweight :	17kD
Sort :	10201
No4 :	1

Host : Rabbit

Modifications : Unmodified

Products Images



Western blot analysis of lysates from PC-12 cells, primary antibody was diluted at 1:1000, 4° over night