

CA228 rabbit pAb

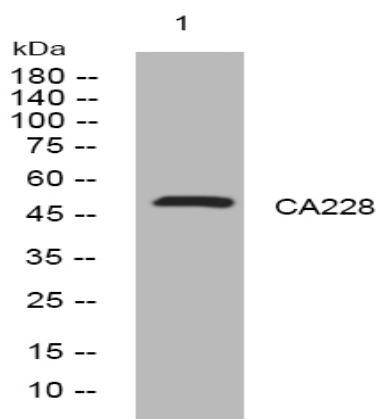
Catalog No :	YT7178
Reactivity :	Human
Applications :	WB
Target :	CA228
Gene Name :	C1orf228 NCRNA00082
Protein Name :	CA228
Human Gene Id :	339541
Human Swiss Prot No :	Q6PIY5
Immunogen :	Synthesized peptide derived from human CA228 AA range: 193-243
Specificity :	This antibody detects endogenous levels of CA228 at Human
Formulation :	Liquid in PBS containing 50% glycerol, 0.5% BSA and 0.02% sodium azide.
Source :	Polyclonal, Rabbit,IgG
Dilution :	WB 1[?]500-2000
Purification :	The antibody was affinity-purified from rabbit antiserum by affinity-chromatography using epitope-specific immunogen.
Concentration :	1 mg/ml
Storage Stability :	-15°C to -25°C/1 year(Do not lower than -25°C)
Molecularweight :	48kD
Sort :	2989

No4 : 1

Host : Rabbit

Modifications : Unmodified

Products Images



Western blot analysis of lysates from HeLa cells, primary antibody was diluted at 1:1000, 4° over night