

MOT10 rabbit pAb

Catalog No :	YT7177
Reactivity :	Human;Mouse;Rat
Applications :	WB;IHC
Target :	MOT10
Fields :	>>Thyroid hormone signaling pathway;>>Protein digestion and absorption
Gene Name :	SLC16A10 MCT10 TAT1
Protein Name :	MOT10
Human Gene Id :	117247
Human Swiss Prot No :	Q8TF71
Mouse Gene Id :	72472
Mouse Swiss Prot No :	Q3U9N9
Rat Gene Id :	170566
Rat Swiss Prot No :	Q91Y77
Immunogen :	Synthesized peptide derived from human MOT10 AA range: 163-213
Specificity :	This antibody detects endogenous levels of MOT10 at Human/Mouse/Rat
Formulation :	Liquid in PBS containing 50% glycerol, 0.5% BSA and 0.02% sodium azide.
Source :	Polyclonal, Rabbit,IgG
Dilution :	WB 1:500-2000;IHC 1:50-300
Purification :	The antibody was affinity-purified from rabbit antiserum by affinity-

chromatography using epitope-specific immunogen.

Concentration : 1 mg/ml

Storage Stability : -15°C to -25°C/1 year(Do not lower than -25°C)

Molecularweight : 57kD

Background : SLC16A10 is a member of a family of plasma membrane amino acid transporters that mediate the Na(+)-independent transport of aromatic amino acids across the plasma membrane.[supplied by OMIM, Apr 2004],

Function : function:Sodium-independent transporter that mediates the uptake of aromatic acid. Can function as a net efflux pathway for aromatic amino acids in the basolateral epithelial cells.,PTM:Not N-glycosylated.,similarity:Belongs to the major facilitator superfamily. Monocarboxylate porter (TC 2.A.1.13) family.,tissue specificity:Strongly expressed in kidney and skeletal muscle and at lower level in placenta and heart.,

Subcellular Location : Cell membrane ; Multi-pass membrane protein . Basolateral cell membrane .

Expression : Strongly expressed in kidney and skeletal muscle and at lower level in placenta and heart.

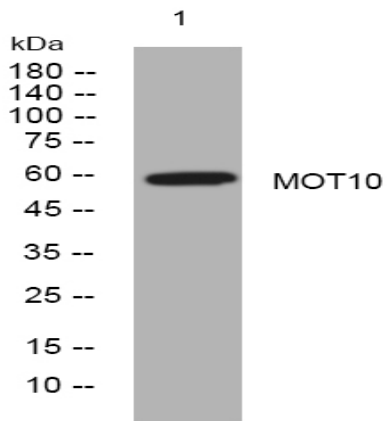
Sort : 9781

No4 : 1

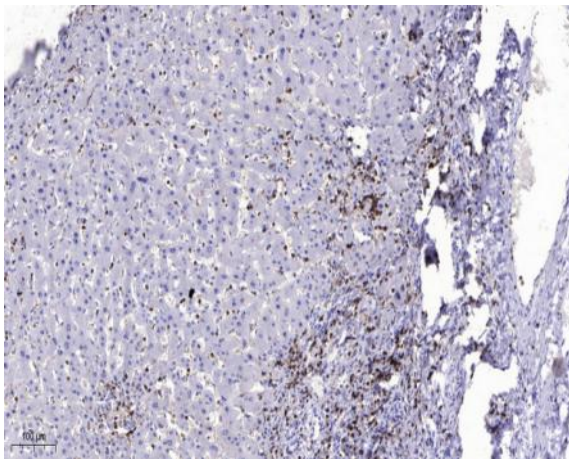
Host : Rabbit

Modifications : Unmodified

Products Images



Western blot analysis of lysates from 293T cells, primary antibody was diluted at 1:1000, 4° over night



Immunohistochemical analysis of paraffin-embedded human liver cancer. 1, Antibody was diluted at 1:200(4° overnight). 2, Tris-EDTA,pH9.0 was used for antigen retrieval. 3,Secondary antibody was diluted at 1:200(room temperature, 45min).