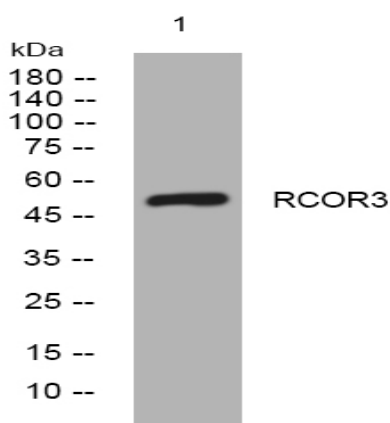


RCOR3 rabbit pAb

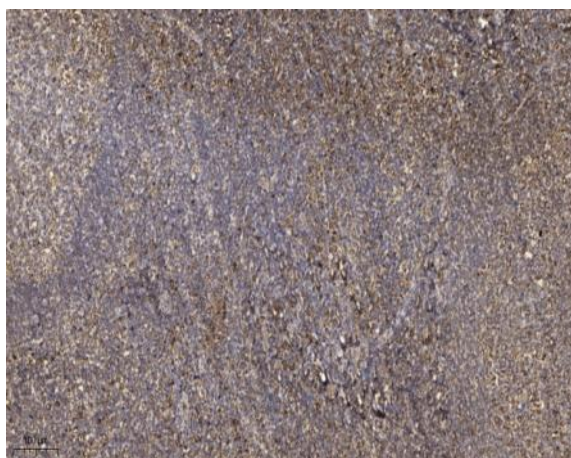
Catalog No :	YT7175
Reactivity :	Human;Mouse
Applications :	WB;IHC
Target :	RCOR3
Gene Name :	RCOR3 KIAA1343
Protein Name :	RCOR3
Human Gene Id :	55758
Human Swiss Prot No :	Q9P2K3
Mouse Gene Id :	214742
Mouse Swiss Prot No :	Q6PGA0
Immunogen :	Synthesized peptide derived from human RCOR3 AA range: 318-368
Specificity :	This antibody detects endogenous levels of RCOR3 at Human/Mouse
Formulation :	Liquid in PBS containing 50% glycerol, 0.5% BSA and 0.02% sodium azide.
Source :	Polyclonal, Rabbit,IgG
Dilution :	WB 1:500-2000;IHC 1:50-300
Purification :	The antibody was affinity-purified from rabbit antiserum by affinity-chromatography using epitope-specific immunogen.
Concentration :	1 mg/ml
Storage Stability :	-15°C to -25°C/1 year(Do not lower than -25°C)

Molecularweight : 54kD**Function :** function:May act as a component of a corepressor complex that represses transcription .,similarity:Belongs to the CoREST family.,similarity:Contains 1 ELM2 domain.,similarity:Contains 2 SANT domains.,**Subcellular Location :** Nucleus .**Sort :** 14066**No4 :** 1**Host :** Rabbit**Modifications :** Unmodified

Products Images



Western blot analysis of lysates from KB cells, primary antibody was diluted at 1:1000, 4° over night



Immunohistochemical analysis of paraffin-embedded human tonsil. 1, Antibody was diluted at 1:200(4° overnight). 2, Tris-EDTA,pH9.0 was used for antigen retrieval. 3,Secondary antibody was diluted at 1:200(room temperature, 45min).