

## STX12 rabbit pAb

<b>Catalog No :</b>	YT7174
<b>Reactivity :</b>	Human;Mouse;Rat
<b>Applications :</b>	WB;ELISA;IHC
<b>Target :</b>	STX12
<b>Fields :</b>	>>Phagosome
<b>Gene Name :</b>	STX12
<b>Protein Name :</b>	STX12
<b>Human Gene Id :</b>	23673
<b>Human Swiss Prot No :</b>	Q86Y82
<b>Mouse Gene Id :</b>	100226
<b>Mouse Swiss Prot No :</b>	Q9ER00
<b>Rat Gene Id :</b>	65033
<b>Rat Swiss Prot No :</b>	G3V7P1
<b>Immunogen :</b>	Synthesized peptide derived from human STX12 AA range: 56-106
<b>Specificity :</b>	This antibody detects endogenous levels of STX12 at Human/Mouse/Rat
<b>Formulation :</b>	Liquid in PBS containing 50% glycerol, 0.5% BSA and 0.02% sodium azide.
<b>Source :</b>	Polyclonal, Rabbit,IgG
<b>Dilution :</b>	WB 1:500-2000;IHC 1:50-300; ELISA 2000-20000
<b>Purification :</b>	The antibody was affinity-purified from rabbit antiserum by affinity-

---

chromatography using epitope-specific immunogen.

---

**Concentration :** 1 mg/ml

---

**Storage Stability :** -15°C to -25°C/1 year(Do not lower than -25°C)

---

**Molecularweight :** 30kD

---

**Function :** function:SNARE that acts to regulate protein transport between late endosomes and the trans-Golgi network.,similarity:Belongs to the syntaxin family.,similarity:Contains 1 t-SNARE coiled-coil homology domain.,

---

**Subcellular Location :** Endosome membrane; Single-pass type IV membrane protein . Golgi apparatus membrane; Single-pass type IV membrane protein . Endomembrane system ; Single-pass type IV membrane protein ; Cytoplasmic side . Early endosome membrane ; Single-pass type IV membrane protein . Recycling endosome membrane ; Single-pass type IV membrane protein .

---

**Sort :** 16761

---

**No4 :** 1

---

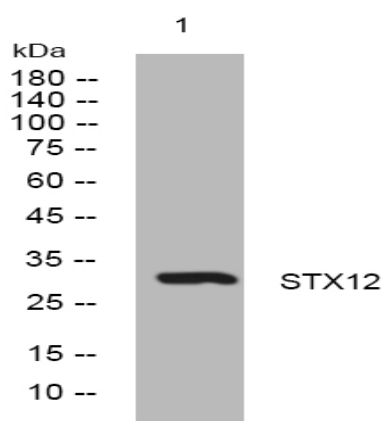
**Host :** Rabbit

---

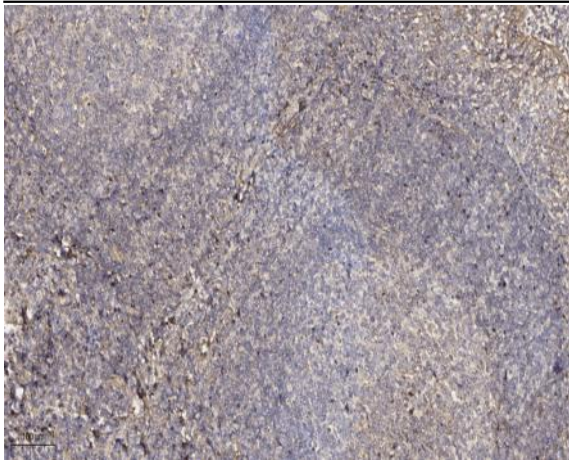
**Modifications :** Unmodified

---

## Products Images



Western blot analysis of lysates from K562 cells, primary antibody was diluted at 1:1000, 4° over night



Immunohistochemical analysis of paraffin-embedded human tonsil. 1, Antibody was diluted at 1:200(4 ° overnight). 2, Tris-EDTA,pH9.0 was used for antigen retrieval. 3,Secondary antibody was diluted at 1:200(room temperature, 45min).