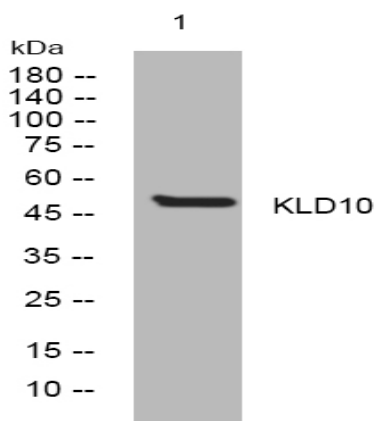


KLD10 rabbit pAb

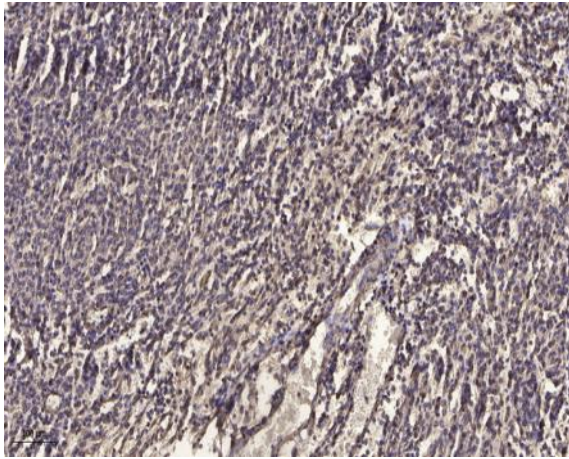
Catalog No :	YT7173
Reactivity :	Human;Mouse;Rat
Applications :	WB;IHC
Target :	KLD10
Gene Name :	KLHDC10 KIAA0265
Protein Name :	KLD10
Human Gene Id :	23008
Human Swiss Prot No :	Q6PID8
Mouse Gene Id :	76788
Mouse Swiss Prot No :	Q6PAR0
Rat Gene Id :	312199
Rat Swiss Prot No :	Q5U3Y0
Immunogen :	Synthesized peptide derived from human KLD10 AA range: 9-59
Specificity :	This antibody detects endogenous levels of KLD10 at Human/Mouse/Rat
Formulation :	Liquid in PBS containing 50% glycerol, 0.5% BSA and 0.02% sodium azide.
Source :	Polyclonal, Rabbit,IgG
Dilution :	WB 1:500-2000;IHC 1:50-300
Purification :	The antibody was affinity-purified from rabbit antiserum by affinity-chromatography using epitope-specific immunogen.

Concentration :	1 mg/ml
Storage Stability :	-15°C to -25°C/1 year(Do not lower than -25°C)
Molecularweight :	49kD
Function :	developmental stage:Expressed in fetal brain, liver, lung, kidney and placenta.,similarity:Contains 6 Kelch repeats.,
Subcellular Location :	Nucleus . Cytoplasm .
Sort :	8943
No4 :	1
Host :	Rabbit
Modifications :	Unmodified

Products Images



Western blot analysis of lysates from HpeG2 cells, primary antibody was diluted at 1:1000, 4° over night



Immunohistochemical analysis of paraffin-embedded human meningioma. 1, Antibody was diluted at 1:200(4° overnight). 2, Tris-EDTA,pH9.0 was used for antigen retrieval. 3,Secondary antibody was diluted at 1:200(room temperature, 45min).