

## GATL2 rabbit pAb

<b>Catalog No :</b>	YT7168
<b>Reactivity :</b>	Human;Mouse
<b>Applications :</b>	WB
<b>Target :</b>	GATL2
<b>Fields :</b>	>>mTOR signaling pathway
<b>Gene Name :</b>	GATSL2
<b>Protein Name :</b>	GATL2
<b>Human Gene Id :</b>	729438
<b>Human Swiss Prot No :</b>	A6NHX0
<b>Mouse Gene Id :</b>	80909
<b>Mouse Swiss Prot No :</b>	Q8CAB8
<b>Immunogen :</b>	Synthesized peptide derived from human GATL2 AA range: 79-129
<b>Specificity :</b>	This antibody detects endogenous levels of GATL2 at Human/Mouse
<b>Formulation :</b>	Liquid in PBS containing 50% glycerol, 0.5% BSA and 0.02% sodium azide.
<b>Source :</b>	Polyclonal, Rabbit,IgG
<b>Dilution :</b>	WB 1[?]500-2000
<b>Purification :</b>	The antibody was affinity-purified from rabbit antiserum by affinity-chromatography using epitope-specific immunogen.
<b>Concentration :</b>	1 mg/ml

**Storage Stability :** -15°C to -25°C/1 year(Do not lower than -25°C)

**Molecularweight :** 36kD

**Subcellular Location :** Cytoplasm, cytosol .

**Expression :** Widely expressed.

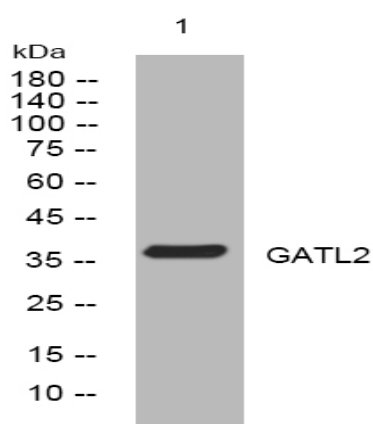
**Sort :** 6494

**No4 :** 1

**Host :** Rabbit

**Modifications :** Unmodified

## Products Images



Western blot analysis of lysates from HpeG2 cells, primary antibody was diluted at 1:1000, 4° over night