

## CLCA3 rabbit pAb

<b>Catalog No :</b>	YT7163
<b>Reactivity :</b>	Human
<b>Applications :</b>	WB
<b>Target :</b>	CLCA3
<b>Gene Name :</b>	CLCA3P CLCA3
<b>Protein Name :</b>	CLCA3
<b>Human Swiss Prot No :</b>	Q9Y6N3
<b>Immunogen :</b>	Synthesized peptide derived from human CLCA3 AA range: 56-106
<b>Specificity :</b>	This antibody detects endogenous levels of CLCA3 at Human
<b>Formulation :</b>	Liquid in PBS containing 50% glycerol, 0.5% BSA and 0.02% sodium azide.
<b>Source :</b>	Polyclonal, Rabbit,IgG
<b>Dilution :</b>	WB 1:500-2000
<b>Purification :</b>	The antibody was affinity-purified from rabbit antiserum by affinity-chromatography using epitope-specific immunogen.
<b>Concentration :</b>	1 mg/ml
<b>Storage Stability :</b>	-15°C to -25°C/1 year(Do not lower than -25°C)
<b>Molecularweight :</b>	29kD
<b>Background :</b>	This gene is a transcribed pseudogene belonging to the calcium sensitive chloride conductance protein family. To date, all members of this gene family map to the same site on chromosome 1p31-p22 and share high degrees of homology in size, sequence and predicted structure, but differ significantly in their tissue distributions. This gene contains several nonsense codons compared to other

family members that render the transcript a candidate for nonsense-mediated mRNA decay (NMD). Therefore, this gene is unlikely to be protein-coding. [provided by RefSeq, Jan 2009],

**Function :**

PTM:N-glycosylated.,similarity:Belongs to the CLCR family.,tissue specificity:Expressed in the lung, trachea, spleen, thymus and mammary gland.,

**Subcellular Location :**

Secreted .

**Expression :**

Expressed in the lung, trachea, spleen, thymus and mammary gland.

**Sort :**

4127

**No4 :**

1

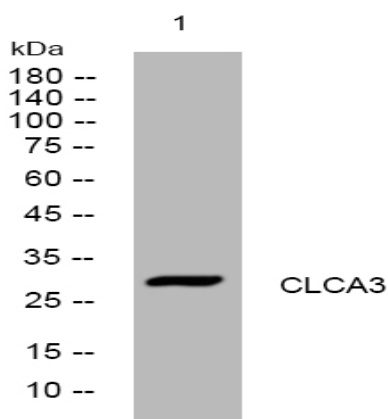
**Host :**

Rabbit

**Modifications :**

Unmodified

## Products Images



Western blot analysis of lysates from U2OS cells, primary antibody was diluted at 1:1000, 4° over night