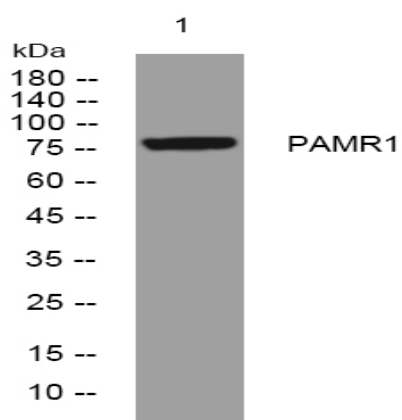


PAMR1 rabbit pAb

Catalog No :	YT7162
Reactivity :	Human;Mouse
Applications :	WB
Target :	PAMR1
Gene Name :	PAMR1 RAMP FP938 UNQ699/PRO1344
Protein Name :	PAMR1
Human Gene Id :	25891
Human Swiss Prot No :	Q6UXH9
Mouse Gene Id :	210622
Mouse Swiss Prot No :	Q8BU25
Immunogen :	Synthesized peptide derived from human PAMR1 AA range: 57-107
Specificity :	This antibody detects endogenous levels of PAMR1 at Human/Mouse
Formulation :	Liquid in PBS containing 50% glycerol, 0.5% BSA and 0.02% sodium azide.
Source :	Polyclonal, Rabbit,IgG
Dilution :	WB 1[?]500-2000
Purification :	The antibody was affinity-purified from rabbit antiserum by affinity-chromatography using epitope-specific immunogen.
Concentration :	1 mg/ml
Storage Stability :	-15°C to -25°C/1 year(Do not lower than -25°C)

Molecularweight :	<u>79kD</u>
Subcellular Location :	<u>Secreted .</u>
Sort :	<u>11607</u>
No4 :	<u>1</u>
Host :	<u>Rabbit</u>
Modifications :	<u>Unmodified</u>

Products Images



Western blot analysis of lysates from HpeG2 cells, primary antibody was diluted at 1:1000, 4° over night