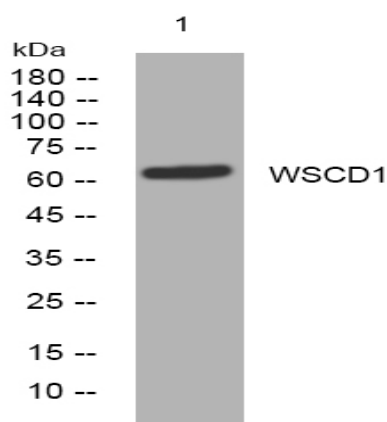


WSCD1 rabbit pAb

Catalog No :	YT7161
Reactivity :	Human;Mouse;Rat
Applications :	WB
Target :	WSCD1
Gene Name :	WSCD1 KIAA0523
Protein Name :	WSCD1
Human Gene Id :	23302
Human Swiss Prot No :	Q658N2
Mouse Gene Id :	216881
Mouse Swiss Prot No :	Q80XH4
Rat Gene Id :	287466
Rat Swiss Prot No :	Q505J3
Immunogen :	Synthesized peptide derived from human WSCD1 AA range: 442-492
Specificity :	This antibody detects endogenous levels of WSCD1 at Human/Mouse/Rat
Formulation :	Liquid in PBS containing 50% glycerol, 0.5% BSA and 0.02% sodium azide.
Source :	Polyclonal, Rabbit,IgG
Dilution :	WB 1:500-2000
Purification :	The antibody was affinity-purified from rabbit antiserum by affinity-chromatography using epitope-specific immunogen.

Concentration :	1 mg/ml
Storage Stability :	-15°C to -25°C/1 year(Do not lower than -25°C)
Molecularweight :	63kD
Function :	similarity:Belongs to the WSCD family.,similarity:Contains 2 WSC domains.,
Subcellular Location :	Membrane ; Single-pass membrane protein .
Sort :	24330
No4 :	1
Host :	Rabbit
Modifications :	Unmodified

Products Images



Western blot analysis of lysates from SH-SY5Y cells, primary antibody was diluted at 1:1000, 4° over night