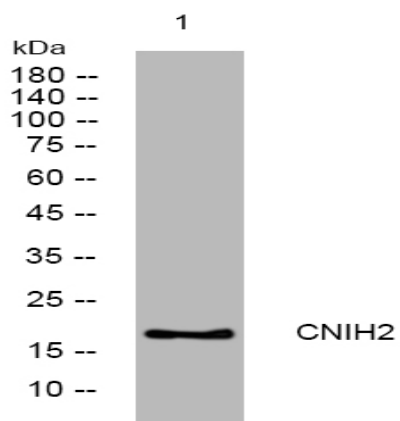


CNIH2 rabbit pAb

Catalog No :	YT7157
Reactivity :	Human;Mouse;Rat
Applications :	WB
Target :	CNIH2
Gene Name :	CNIH2 CNIL
Protein Name :	CNIH2
Human Gene Id :	254263
Human Swiss Prot No :	Q6PI25
Mouse Gene Id :	12794
Mouse Swiss Prot No :	O35089
Rat Gene Id :	361705
Rat Swiss Prot No :	Q5BJU5
Immunogen :	Synthesized peptide derived from human CNIH2 AA range: 10-60
Specificity :	This antibody detects endogenous levels of CNIH2 at Human/Mouse/Rat
Formulation :	Liquid in PBS containing 50% glycerol, 0.5% BSA and 0.02% sodium azide.
Source :	Polyclonal, Rabbit,IgG
Dilution :	WB 1:500-2000
Purification :	The antibody was affinity-purified from rabbit antiserum by affinity-chromatography using epitope-specific immunogen.

Concentration :	1 mg/ml
Storage Stability :	-15°C to -25°C/1 year(Do not lower than -25°C)
Molecularweight :	18kD
Background :	The protein encoded by this gene is an auxiliary subunit of the ionotropic glutamate receptor of the AMPA subtype. AMPA receptors mediate fast synaptic neurotransmission in the central nervous system. This protein has been reported to interact with the Type I AMPA receptor regulatory protein isoform gamma-8 to control assembly of hippocampal AMPA receptor complexes, thereby modulating receptor gating and pharmacology. Alternative splicing results in multiple transcript variants. [provided by RefSeq, Aug 2012],
Function :	function:Involved in the transport and maturation of proteins.,similarity:Belongs to the cornichon family.,
Subcellular Location :	Endoplasmic reticulum membrane ; Multi-pass membrane protein . Cell junction, synapse, postsynaptic cell membrane ; Multi-pass membrane protein . Cell projection, dendrite . Cell projection, dendritic spine . Cell junction, synapse, postsynaptic density . Also localizes to the cell membrane of extrasynaptic sites (dendritic shafts, spines of pyramidal cells). .
Expression :	Expression is up-regulated in dorsolateral prefrontal cortex of patients with schizophrenia (postmortem brain study).
Sort :	4338
No4 :	1
Host :	Rabbit
Modifications :	Unmodified

Products Images



Western blot analysis of lysates from MCF-7 cells, primary antibody was diluted at 1:1000, 4° over night