

## ARL8B rabbit pAb

<b>Catalog No :</b>	YT7155
<b>Reactivity :</b>	Human;Mouse;Rat
<b>Applications :</b>	WB
<b>Target :</b>	ARL8B
<b>Fields :</b>	>>Salmonella infection
<b>Gene Name :</b>	ARL8B ARL10C GIE1
<b>Protein Name :</b>	ARL8B
<b>Human Gene Id :</b>	55207
<b>Human Swiss Prot No :</b>	Q9NVJ2
<b>Mouse Gene Id :</b>	67166
<b>Mouse Swiss Prot No :</b>	Q9CQW2
<b>Rat Gene Id :</b>	500282
<b>Rat Swiss Prot No :</b>	Q66HA6
<b>Immunogen :</b>	Synthesized peptide derived from human ARL8B AA range: 9-59
<b>Specificity :</b>	This antibody detects endogenous levels of ARL8B at Human/Mouse/Rat
<b>Formulation :</b>	Liquid in PBS containing 50% glycerol, 0.5% BSA and 0.02% sodium azide.
<b>Source :</b>	Polyclonal, Rabbit,IgG
<b>Dilution :</b>	WB 1[?]500-2000
<b>Purification :</b>	The antibody was affinity-purified from rabbit antiserum by affinity-

---

chromatography using epitope-specific immunogen.

---

**Concentration :** 1 mg/ml

---

**Storage Stability :** -15°C to -25°C/1 year(Do not lower than -25°C)

---

**Molecularweight :** 20kD

---

**Function :** function:May play a role in lysosomes motility (PubMed:16537643). May play a role in chromosomes segregation (PubMed:15331635).,similarity:Belongs to the small GTPase superfamily. Arf family.,subcellular location:According to PubMed:15331635 it localizes with microtubules at the spindle mid-zone during mitosis.,subunit:Interacts with tubulin.,tissue specificity:Ubiquitously expressed.,

---

**Subcellular Location :** Late endosome membrane . Lysosome membrane . Cytoplasm, cytoskeleton, spindle . Cell projection, axon . Cell junction, synapse . Cytolytic granule membrane . GTP-bound form resides on lysosomal membranes, whereas GDP-bound form is likely associated with microtubular structures (PubMed:16650381). Localizes with microtubules at the spindle mid-zone during mitosis. In dendritic cells, localizes to MHC II+ compartments (By similarity). .

---

**Expression :** Ubiquitously expressed.

---

**Sort :** 2264

---

**No4 :** 1

---

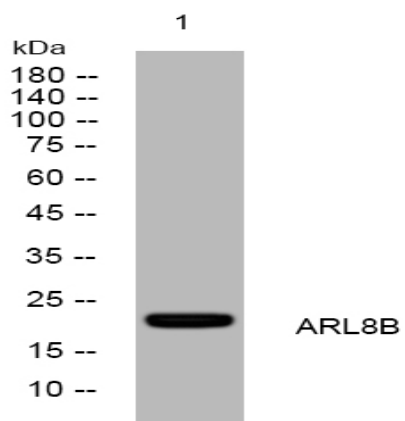
**Host :** Rabbit

---

**Modifications :** Unmodified

---

## Products Images



Western blot analysis of lysates from K562 cells, primary antibody was diluted at 1:1000, 4° over night