

EMAL4 rabbit pAb

Catalog No :	YT7154
Reactivity :	Human;Mouse
Applications :	WB
Target :	EMAL4
Fields :	>>Pathways in cancer;>>Non-small cell lung cancer;>>PD-L1 expression and PD-1 checkpoint pathway in cancer
Gene Name :	EML4 C2orf2 EMAPL4
Protein Name :	EMAL4
Human Gene Id :	27436
Human Swiss Prot No :	Q9HC35
Mouse Gene Id :	78798
Mouse Swiss Prot No :	Q3UMY5
Immunogen :	Synthesized peptide derived from human EMAL4 AA range: 398-448
Specificity :	This antibody detects endogenous levels of EMAL4 at Human/Mouse
Formulation :	Liquid in PBS containing 50% glycerol, 0.5% BSA and 0.02% sodium azide.
Source :	Polyclonal, Rabbit,IgG
Dilution :	WB 1[?]500-2000
Purification :	The antibody was affinity-purified from rabbit antiserum by affinity-chromatography using epitope-specific immunogen.
Concentration :	1 mg/ml

Storage Stability : -15°C to -25°C/1 year(Do not lower than -25°C)

Molecularweight : 108kD

Background : This gene is a member of the echinoderm microtubule associated protein-like family. The encoded WD-repeat protein may be involved in microtubule formation. Abnormal fusion of parts of this gene with portions of the anaplastic lymphoma receptor tyrosine kinase gene, which generates EML4-ALK fusion transcripts, is one of the primary mutations associated with non-small cell lung cancer. Alternative splicing of this gene results in two transcript variants. [provided by RefSeq, Jan 2015],

Function : developmental stage:Strongly overexpressed during mitosis.,function:May modify the assembly dynamics of microtubules, such that microtubules are slightly longer, but more dynamic.,similarity:Belongs to the WD repeat EMAP family.,similarity:Contains 9 WD repeats.,

Subcellular Location : Cytoplasm, cytoskeleton . Cytoplasm . Cytoplasm, cytoskeleton, spindle . Cytoplasm, cytoskeleton, microtubule organizing center . Midbody . Localizes to microtubules (MTs) during interphase with a significantly reduced affinity for MTs during mitosis. .

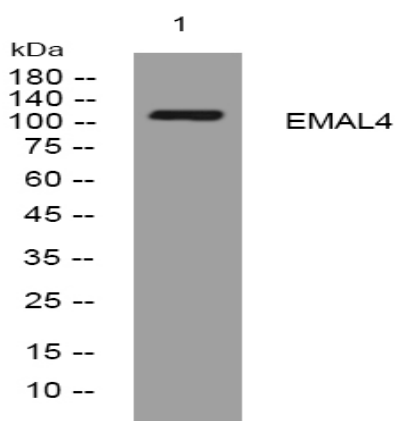
Sort : 5526

No4 : 1

Host : Rabbit

Modifications : Unmodified

Products Images



Western blot analysis of lysates from Jurkat cells, primary antibody was diluted at 1:1000, 4° over night