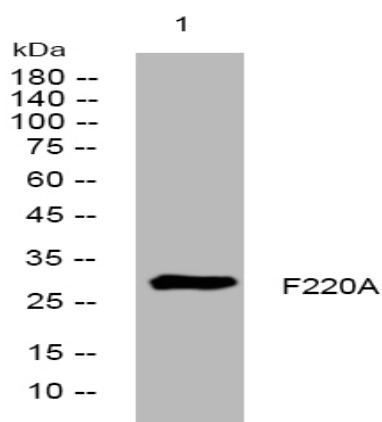


F220A rabbit pAb

Catalog No :	YT7148
Reactivity :	Human;Mouse;Rat
Applications :	WB
Target :	F220A
Gene Name :	FAM220A C7orf70 SIPAR
Protein Name :	F220A
Human Gene Id :	84792
Human Swiss Prot No :	Q7Z4H9
Mouse Gene Id :	67238
Mouse Swiss Prot No :	Q3ZN08
Rat Gene Id :	498145
Rat Swiss Prot No :	Q6DGF6
Immunogen :	Synthesized peptide derived from human F220A AA range: 186-236
Specificity :	This antibody detects endogenous levels of F220A at Human/Mouse/Rat
Formulation :	Liquid in PBS containing 50% glycerol, 0.5% BSA and 0.02% sodium azide.
Source :	Polyclonal, Rabbit,IgG
Dilution :	WB 1:500-2000
Purification :	The antibody was affinity-purified from rabbit antiserum by affinity-chromatography using epitope-specific immunogen.

Concentration :	1 mg/ml
Storage Stability :	-15°C to -25°C/1 year(Do not lower than -25°C)
Molecularweight :	28kD
Function :	function:May negatively regulate STAT3.,subunit:Interacts with STAT3.,
Subcellular Location :	Nucleus .
Sort :	5835
No4 :	1
Host :	Rabbit
Modifications :	Unmodified

Products Images



Western blot analysis of lysates from PC-12 cells, primary antibody was diluted at 1:1000, 4° over night