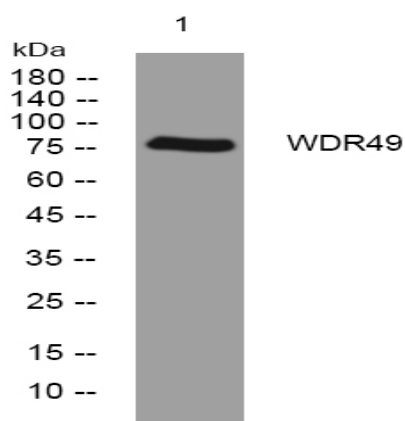


WDR49 rabbit pAb

Catalog No :	YT7144
Reactivity :	Human
Applications :	WB
Target :	WDR49
Gene Name :	WDR49
Protein Name :	WDR49
Human Gene Id :	151790
Human Swiss Prot No :	Q8IV35
Immunogen :	Synthesized peptide derived from human WDR49 AA range: 345-395
Specificity :	This antibody detects endogenous levels of WDR49 at Human
Formulation :	Liquid in PBS containing 50% glycerol, 0.5% BSA and 0.02% sodium azide.
Source :	Polyclonal, Rabbit,IgG
Dilution :	WB 1[?]500-2000
Purification :	The antibody was affinity-purified from rabbit antiserum by affinity-chromatography using epitope-specific immunogen.
Concentration :	1 mg/ml
Storage Stability :	-15°C to -25°C/1 year(Do not lower than -25°C)
Molecularweight :	77kD
Function :	similarity:Contains 8 WD repeats.,

Sort :	<u>24260</u>
No4 :	<u>1</u>
Host :	<u>Rabbit</u>
Modifications :	<u>Unmodified</u>

Products Images



Western blot analysis of lysates from SW480 cells, primary antibody was diluted at 1:1000, 4° over night