

LIN54 rabbit pAb

Catalog No :	YT7140
Reactivity :	Human;Mouse;Rat
Applications :	WB;ELISA;IHC
Target :	LIN54
Fields :	>>Cellular senescence
Gene Name :	LIN54 CXCDC1 KIAA2037
Protein Name :	LIN54
Human Gene Id :	132660
Human Swiss Prot No :	Q6MZP7
Mouse Gene Id :	231506
Mouse Swiss Prot No :	Q571G4
Rat Gene Id :	305171
Rat Swiss Prot No :	Q641Z1
Immunogen :	Synthesized peptide derived from human LIN54 AA range: 62-112
Specificity :	This antibody detects endogenous levels of LIN54 at Human/Mouse/Rat
Formulation :	Liquid in PBS containing 50% glycerol, 0.5% BSA and 0.02% sodium azide.
Source :	Polyclonal, Rabbit,IgG
Dilution :	WB 1:500-2000;IHC 1:50-300; ELISA 2000-20000
Purification :	The antibody was affinity-purified from rabbit antiserum by affinity-

chromatography using epitope-specific immunogen.

Concentration : 1 mg/ml

Storage Stability : -15°C to -25°C/1 year(Do not lower than -25°C)

Molecularweight : 82kD

Background : LIN54 is a component of the LIN, or DREAM, complex, an essential regulator of cell cycle genes (Schmit et al., 2009 [PubMed 19725879]).[supplied by OMIM, Dec 2010],

Function : function:Component of the DREAM complex, a multiprotein complex that can both act as a transcription activator or repressor depending on the context. In G0 phase, the complex binds to more than 800 promoters and is required for repression of E2F target genes. In S phase, the complex selectively binds to the promoters of G2/M genes whose products are required for mitosis and participates in their cell cycle dependent activation.,similarity:Belongs to the lin-54 family.,similarity:Contains 2 CXC domains.,subunit:Component of the DREAM complex (also named LINC complex) at least composed of E2F4, E2F5, LIN9, LIN37, LIN52, LIN54, MYBL1, MYBL2, RBL1, RBL2, RBBP4, TFDP1 and TFDP2. The complex exists in quiescent cells where it represses cell cycle-dependent genes. It dissociates in S phase when LIN9, LIN37, LIN52 and LIN54 form a subcomplex that binds to MYBL2.,

Subcellular Location : Nucleus .

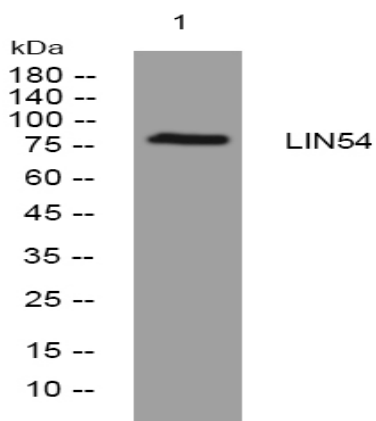
Sort : 9195

No4 : 1

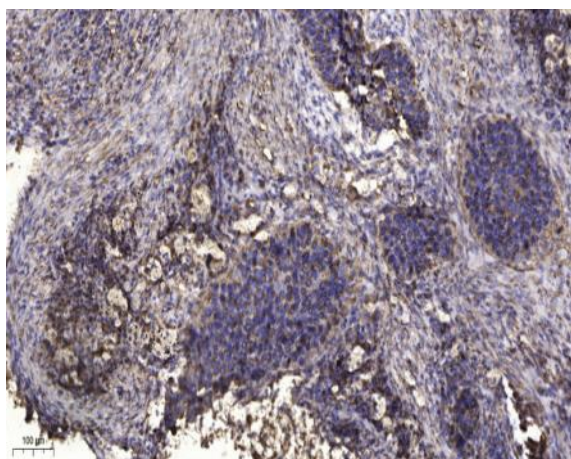
Host : Rabbit

Modifications : Unmodified

Products Images



Western blot analysis of lysates from Hela cells, primary antibody was diluted at 1:1000, 4° over night



Immunohistochemical analysis of paraffin-embedded human Squamous cell carcinoma of lung. 1, Antibody was diluted at 1:200(4° overnight). 2, Tris-EDTA,pH9.0 was used for antigen retrieval. 3,Secondary antibody was diluted at 1:200(room temperature, 45min).