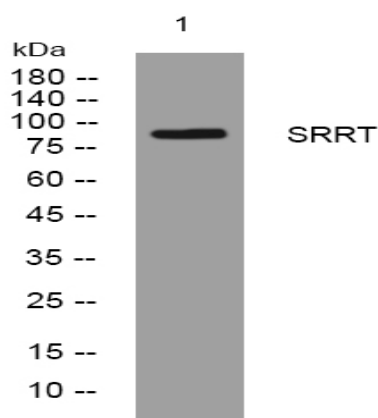


SRRT rabbit pAb

Catalog No :	YT7136
Reactivity :	Human;Mouse
Applications :	WB
Target :	SRRT
Gene Name :	SRRT ARS2 ASR2
Protein Name :	SRRT
Human Gene Id :	51593
Human Swiss Prot No :	Q9BXP5
Mouse Gene Id :	83701
Mouse Swiss Prot No :	Q99MR6
Immunogen :	Synthesized peptide derived from human SRRT AA range: 403-453
Specificity :	This antibody detects endogenous levels of SRRT at Human/Mouse
Formulation :	Liquid in PBS containing 50% glycerol, 0.5% BSA and 0.02% sodium azide.
Source :	Polyclonal, Rabbit,IgG
Dilution :	WB 1[?]500-2000
Purification :	The antibody was affinity-purified from rabbit antiserum by affinity-chromatography using epitope-specific immunogen.
Concentration :	1 mg/ml
Storage Stability :	-15°C to -25°C/1 year(Do not lower than -25°C)

Molecularweight :	96kD
Function :	function:Confers arsenite resistance.,similarity:Belongs to the ARS2 family.,
Subcellular Location :	Nucleus, nucleoplasm . Cytoplasm . Predominantly nuclear. Shuttles between the nucleus and the cytoplasm in a CRM1-dependent way (By similarity). .
Expression :	Ubiquitously expressed.
Sort :	16623
No4 :	1
Host :	Rabbit
Modifications :	Unmodified

Products Images



Western blot analysis of lysates from MDA-MB cells, primary antibody was diluted at 1:1000, 4° over night