

## MYG1 rabbit pAb

<b>Catalog No :</b>	YT7133
<b>Reactivity :</b>	Human;Mouse;Rat
<b>Applications :</b>	WB;ELISA;IHC
<b>Target :</b>	MYG1
<b>Gene Name :</b>	C12orf10
<b>Protein Name :</b>	MYG1
<b>Human Swiss Prot No :</b>	Q9HB07
<b>Mouse Gene Id :</b>	60315
<b>Mouse Swiss Prot No :</b>	Q9JK81
<b>Rat Gene Id :</b>	300258
<b>Rat Swiss Prot No :</b>	Q641W2
<b>Immunogen :</b>	Synthesized peptide derived from human MYG1 AA range: 296-346
<b>Specificity :</b>	This antibody detects endogenous levels of MYG1 at Human/Mouse/Rat
<b>Formulation :</b>	Liquid in PBS containing 50% glycerol, 0.5% BSA and 0.02% sodium azide.
<b>Source :</b>	Polyclonal, Rabbit,IgG
<b>Dilution :</b>	WB 1:500-2000;IHC 1:50-300; ELISA 2000-20000
<b>Purification :</b>	The antibody was affinity-purified from rabbit antiserum by affinity-chromatography using epitope-specific immunogen.
<b>Concentration :</b>	1 mg/ml

**Storage Stability :** -15°C to -25°C/1 year(Do not lower than -25°C)

**Molecularweight :** 41kD

**Function :** similarity:Belongs to the UPF0160 (MYG1) family.,tissue specificity:Ubiquitously expressed, with highest levels in testis.,

**Subcellular Location :** Nucleus, nucleoplasm . Mitochondrion matrix . Nucleus, nucleolus .

**Expression :** Ubiquitously expressed, with highest levels in testis.

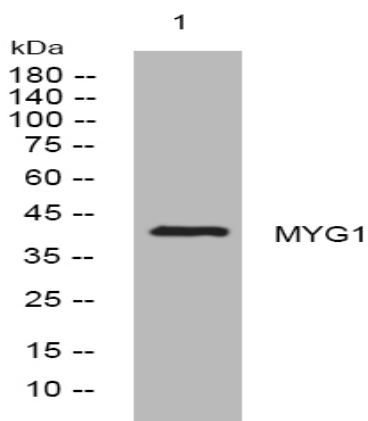
**Sort :** 10457

**No4 :** 1

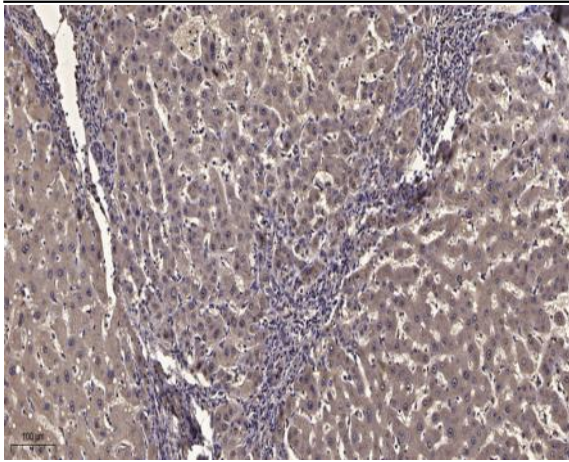
**Host :** Rabbit

**Modifications :** Unmodified

## Products Images



Western blot analysis of lysates from PC-12 cells, primary antibody was diluted at 1:1000, 4° over night



Immunohistochemical analysis of paraffin-embedded human liver cancer. 1, Antibody was diluted at 1:200(4° overnight). 2, Tris-EDTA,pH9.0 was used for antigen retrieval. 3,Secondary antibody was diluted at 1:200(room temperature, 45min).